

2021 COMPANION GUIDE

Eat Play Stay

Bath • Brunswick & Midcoast Maine



www.midcoastmaine.com • 207.725.8797

Arrowsic • Bath • Bowdoin • Bowdoinham • Brunswick • Dresden • Edgecomb • Georgetown • Harpswell
Phippsburg • Richmond • Topsham • West Bath • Westport Island • Wiscasset • Woolwich

Get Away to Classic, Coastal Maine



OCEANFRONT GETAWAYS • GOLF • FAMILY VACATIONS

Lodged in a spectacular setting, where a river meets the sea, our 450 acre campus boasts deep waterfront, ponds, beaches and forests, all surrounding our classic Maine lodge, cottages, suites, and even our own lighthouse. Come stay with us, have fun, and relax. Away from it all, and less than an hour from Portland.



www.sebasco.com 866.721.0348

29 Kenyon Road, P.O. Box 75, Sebasco Estates, Maine



WILD OATS

cafe | bakery | deli



Real food made by real people!

Open Every Day 7:30 - 4:30

207-725-6287 | wildoatsbakery.com

166 Admiral Fitch Avenue, Brunswick, ME 04011

Expert care when you need it.

If you are unable to see your primary care provider, the **Mid Coast Hospital Walk-In Clinic** offers expert care for minor medical problems.

Open every day
7 a.m. to 7 p.m.
22 Station Avenue,
Brunswick
(207) 406-7500

For life-threatening concerns and critical situations, call 9-1-1.



QUICK CARE



**VIRTUAL
TELEHEALTH VISITS**



ONLINE CHECK-IN



**MID COAST HOSPITAL
COORDINATION**



**LOWER COST
THAN EMERGENCY
DEPARTMENT**



**EMERGENCY-TRAINED
SPECIALISTS**



**FULL INTEGRATION
WITH MID COAST
MEDICAL GROUP**



**CONVENIENT
LOCATION**



MID COAST HOSPITAL

Walk-In Clinic

WWW.MIDCOASTHEALTH.COM/WALKIN

RE/MAX[®] RIVERSIDE

1 BOWDOIN MILL ISLAND SUITE 101
TOPSHAM, MAINE



**WE LIVE HERE
WE WORK HERE
THIS IS OUR COMMUNITY**

207.725.8505

REMAX-RIVERSIDE-MAINE.COM



Each Office Independently Owned And Operated

RE/MAX



Welcome Back

A Message from the Executive Director

Welcome back, my old friends, and for our new visitors, we're excited to meet you and show you why Bath, Brunswick and Midcoast Maine is full of treasures to explore. 2020 was a year unlike any other, and that lasted well into 2021, and affected the planning of this guide. Here are just a few things to keep in mind as you flip through these pages.

First, you will notice if you look closely that there are hardly any event dates in this guide which is atypical. However, Maine's capacity restrictions were not lifted until May 24, and our event planning organizations have been working feverishly to confirm their dates. With so few finalized at time of printing, we encourage you to contact our office, or the local information centers in Brunswick and Bath, for more up-to-date event dates either when you get here or as you trip plan. That's just good advice in general too, because this guide contains a mere sampling of our offerings, and there is so much more niche information we will likely be able to share in your specific interest areas if you contact us directly.

Secondly, though our masking requirements and capacity limits have been lifted for the most part, we do ask all travelers to note the requirements as you explore the shops and restaurants in the region. Most businesses have clearly marked signage if they require masks, and just like wearing your shoes into a neighbor's house, we respect the wishes of those whose house we are in- so if a business asks you to mask up, please do.

As far as the six-feet of social distancing goes, the running joke for most native Mainers has been 'six feet seems a little close, in general.' I like to say 'we were social distancing before it was cool.' You should know Maine is loaded with many fresh air, wide open spaces, making it ideal for anyone who likes their independence. With that, if you do see a sign asking you to social distance up to six feet, we do ask that you honor those wishes as well.

Other than that, welcome to one of the most beautiful corners of the country. The sign on the way in says "Maine: The Way Life Should Be" and that is what we try to live by. We're kind, hard-working and respectful of the land and each other. We tend to attract those that respond well to those values too, so in case you like visiting- maybe give a thought to relocating to Maine. It's a great place to start a family, raise a family and to retire.

If you need any more information on our region, please e-mail our office and either myself or our Chamber Coordinator Claire, will get back to you.

Safe travels and welcome back

Cory King, Executive Director

Info@midcoastmaine.com • (207) 725-8797



Table of Contents

Can you get there from here? 8

Weather..... 10

Top 10 Lists..... 13-22

 Top 10 Live Entertainment Venues..... 13

 Top 10 Places to Go for a Walk..... 18

 Top 10 Places to Bring a Friend..... 20

Our Communities

 Arrowsic, Bath24

 Map of Topsham, Brunswick & Harpswell25

 Bowdoin, Bowdoinham, Brunswick.....26

 Map of Bath and surrounding communities.....27

 Dresden, Edgecomb, Georgetown, Harpswell.....28

 Phippsburg, Richmond, Topsham 30

 West Bath, Westport Island, Wiscasset, Woolwich31

 Bath-Brunswick Midcoast Maine Overview Map..... 32-33

Restaurants & Cafés..... 34-35

Lodging 38-39

Driving Times/Mileage between Popular Destinations43

Frequently Asked Questions from Tourists44-45

Accolades46-47

Cornerstone Members.....49

Chamber Member Directory 50-62

Eat Play Stay is produced by
The Southern Midcoast Maine Chamber of Commerce and RFB Advertising LLC.
For advertising information please contact
Cory King, executivedirector@midcoastmaine.com
8 Venture Avenue • Brunswick, Maine 04011

Publisher: Ross Cunningham, RFB Advertising
Editors: Cory King and Claire Papell Advertising: Ross Cunningham, Jenn Rich
Design/Graphics: NVDesign, Nicole Vanorse Cover Photo: Andrew Estey
Photography, Angela Arno – Further North Photography, Molly Haley, Andrew Estey.

Copyright 2021. All rights reserved. Reproduction in whole or part without written permission is prohibited. This guide is made possible by the participation of the advertisers. We offer them our thanks and ask you to consider them first when patronizing businesses in Maine.

Disclaimer: This publication is provided "as is" for informational purposes only. You assume all risk concerning suitability and accuracy of the information stated or implied within this publication. Although extensive reviews have attempted to ensure the accuracy of this publication, the copyright holder assumes no responsibility for and disclaims all liability for any such inaccuracies, errors, or omissions.



Can you get there from here?

There is a classic Maine joke, that is so well-worn that it's nearly a rite of passage. It's a piece of dry humor about a lost tourist asking for directions, and the punchline, being delivered in the thickest accent one can muster is 'You can't get there from here' (though it comes out as 'You caaan't get they-uh from hear-uh').

Well, that's simply not the case in the Bath-Brunswick-Midcoast region. No matter where you come from or where you're going, we can help get you there, or here! Below you will find numerous listings of websites to assist you in identifying transportation options, travel information and more. And, feel free to call the Southern Midcoast Maine Chamber office at (207) 725-8797 and we can answer your travel questions, too.

Transportation Websites:

Travel Options: Explore Maine	ExploreMaine.org
<i>(Information about traveling in Maine by Air, Bike, Bus, Car, Ferry, and Train)</i>	

Train: Amtrak Downeaster	AmtrakDowneaster.com
<i>(Amtrak has five daily runs between Brunswick, ME and Boston, MA with multiple stops in between)</i>	

Bus: Concord Coach Lines	ConcordCoachLines.com
<i>(Closest Stations are in Portland and Auburn- local bus lines can get you from Portland to Brunswick)</i>	

Bus: Metro Breez	gpmetro.org/313/METRO-BREEZ
<i>(Breez Northbound to Brunswick, stops in Portland (2), Yarmouth, Freeport and Brunswick)</i>	

Bus & Trolley: In-town Bath	CityofBath.com/Transportation
--	--

Bus: Brunswick Explorer, In-town Brunswick	BrunswickExplorer.org
---	--

Plane: Brunswick Executive Airport	mrra.us/brunswick-executive-airport
---	--

Land Trusts with Trail Maps Websites:

Brunswick-Topsham Land Trust	btlit.org
------------------------------	--

Harpswell Heritage Land Trust	hhltmaine.org
-------------------------------	--

Kennebec Estuary Land Trust	KennebecEstuary.org
-----------------------------	--

Phippsburg Land Trust	PhippsburgLandTrust.org
-----------------------	--

Exceptional Assisted Living since 1917
One bedroom and efficiencies.
On and off-site activities.
Homemade meals.
Stunning Kennebec River views on 28 acres!!



For more information, contact Liz Wyman at 207-443-8986 or executivedirector@planthome.org

www.planthome.org



**We believe in
the value of experience
and a job done right.**

Real Estate Estate Planning Corporate Law Trusts

H&A HOPKINSON & ABBONDANZA
ATTORNEYS

6 City Center, Suite 400
Portland, Maine 04101
207 772.5845

746 High Street Bath,
Maine 04530
207 386.0400

hablaw.com

MidcoastMaine.com

Weather in Bath–Brunswick Midcoast Maine

If you live in Maine, you know that most stories about the state's weather just aren't true. For if you have lived here, even for a short while, you can understand why Maine's year-round climate, especially in coastal areas like the Bath–Brunswick Midcoast Maine Region, is such a well-kept secret.

With its four splendid seasons and Casco Bay on its doorstep, the region's weather is often described as "ideal".

With an average low temperature of 10 degrees (F) in January, an average high temperature of 80 degrees (F) in July, and a wealth of sunny days throughout the year, the Bath–Brunswick Midcoast region offers a climate perfectly suited to a wide range of recreational activities.

<u>Month</u>	<u>Avg. High</u>	<u>Avg. Low</u>
January	31 F	10 F
February	34 F	13 F
March	43 F	23 F
April	54 F	33 F
May	65 F	43 F
June	74 F	52 F
July	80 F	58 F
August	79 F	57 F
September	70 F	48 F
October	59 F	37 F
November	48 F	29 F
December	37 F	17 F

Avg. precipitation is 3.15 in. per month (August) to 4.88 in. per month (Nov.) (All data from USClimateData.com)

Travel & Tourism Websites:

Maine's Midcoast & Islands <i>(Our regional tourism council for our region and beyond)</i>	MainesMidcoast.com
Southern Midcoast Maine Chamber <i>(Regional chamber that built this guide)</i>	MidcoastMaine.com
Mid-Coast Maine Inns	MidcoastMaineInns.com
Main Street Bath	VisitBath.com
Brunswick Downtown Association	BrunswickDowntown.org
Harpswell Business Association	HarpswellMaine.org
Phippsburg Business Association	Phippsburg.info

Municipal Websites:

Found in our directory in the back of this guide (under Municipal)

Tide Charts Website:

US Harbors (Maine)	USHarbors.com/harbor/maine
--------------------	----------------------------

BAYVIEW GALLERY

58 Maine Street, Brunswick, Maine 04011 ~ 800-244-3007



Looking to Rame Island by Thomas Adkins, oil, 24" x 30"



Harbor Impression by Robert Colburn, acrylic, 24" x 30"



www.bayviewgallery.com

FRONTIER

food. film. music. art.



Check website for
2021 offerings

Connecting to the world through
food, arts, & culture

Located at Fort Andross
14 Maine Street, Brunswick, ME
explorefrontier.com
207.725.5222

Cabot Mill Antiques

- A 16,000 square-foot showroom
- More than 160 high-quality displays
- New merchandise arriving daily
- Friendly, professional sales staff
- Offering quality authentic antiques

*You're sure to find something rare,
unique and one-of-a-kind!*

Voted Best of Midcoast Maine



Open Daily 10am-5pm
14 Maine Street Brunswick, ME 04011
T: 207-725-2855
cabot@waterfrontme.com

www.cabotiques.com

BUILT TO DELIVER



**158 Church Road
BRUNSWICK
(207) 725-5540**


**HANCOCK
LUMBER™**

www.HancockLumber.com

TOP 10 *List*

These top ten lists were created to give you an idea of activities to enjoy and places to visit. The lists were developed using responses from chamber members and citizens in our region. By no means an exhaustive list, these are just samples of the fun to be experienced in the Midcoast! The order of these lists is either alphabetical, reverse-alphabetical or no particular order- we just tell you so you don't think that the first answer is the most popular- these are all popular answers! See how many you and your family can experience during your visit!



Top 10 Live Entertainment Venues

(In Alphabetical Order)

(Please note, due to Covid-19 guidelines, some venues may not be open when you visit, but once we are back to normal, these venues should thrive again).

Bars & Restaurants (Multiple locations received votes)

Byrne's Irish Pub, Bath & Brunswick; Cook's Lobster & Ale House, Bailey Island; Flight Deck Brewing & Frontier, Brunswick; Sea Dog Brewing, Topsham.

There are a bevy of uniquely-sized stages in bars and restaurants across the region for live performers. Frontier has theater seating once they re-open; Cook's has an outdoor tent venue; Byrne's has a tavern feel as does Sea Dog Brewing; Flight Deck has entertainers in their tasting room and occasionally outdoors too. While all of these venues do it a bit differently, the bottom line is the same: great food, great drinks and great fun!

Brunswick Mall's Gazebo

Maine Street, Brunswick

One of the most photographed structures in the region, the Brunswick Mall is anchored on the Bowdoin College end of the downtown with a large wooden gazebo. This becomes a center for activity from May through October with food trucks, community events and the Brunswick Downtown Association's Music on the Mall series each Wednesday evening in the summer.

Maily Waterfront Park, Bowdoinham

6 Main Street, Bowdoinham

This outdoor venue is a relaxing way to escape and it becomes a destination on Sunday nights in July and August as people come from miles around to listen to great local acts performing on the water's edge.



**MIDCOAST
SYMPHONY
ORCHESTRA**



We are Brunswick/Topsham's community orchestra with more than 80 musicians. Under the baton of Rohan Smith, we bring top-notch performances to the Gendron Franco Center in Lewiston and the Orion Center in Topsham.

MIDCOASTSYMPHONY.ORG
www.facebook.com/midcoastsymphony
207-315-1712
P.O. Box 86, Brunswick, ME 04011

Maine State Music Theatre, Brunswick

Pickard Theater, Bowdoin College campus (1 Bath Street, Brunswick)

A premiere destination in New England for musical theater, Maine State Music Theatre introduces talent from across the country and pairs them with a wealth of local talent to produce first-rate theater. Details for the 2021 season are still being finalized and were not fully known at time of printing, and potentially some performances may be at other venues. Best to check out www.msmt.org for the full details.

Midcoast Community Theaters

Chocolate Church, Bath; The Theater Project, Brunswick; Studio Theater of Bath

Arts and entertainment thrive in the Bath-Brunswick-Midcoast region. There are several community theater venues that offer shows during various parts of the year. In general, the community theater spaces in the summer are utilized for youth classes or visiting performers. However, each theater has their own acting company and they will offer three to six shows throughout the school year from September through June. The Chocolate Church is a do-everything, aptly-named arts venue with gallery space plus a stage that welcomes live touring professional acts as well as community-based theater performers. The Theater Project has one of the most unique venues you will encounter with a three-sided tiered seating arrangement which makes the theater they perform an immersive and unforgettable experience. The Studio Theater of Bath performs three to five shows per season with their troupe of community players.

Coastal camping that puts you close to it all.

"Best in the Mid-Coast," a short drive from Boothbay, Augusta, Portland and Freeport!

Beautiful Park & Campground, overlooking tidal Thomas Bay.

Over 85 Acres of manicured Lawns, Groves and Picnic Areas.

All the amenities you expect, centrally located on the Mid-Coast!

Have Freeport, Augusta, Portland and Boothbay at your fingertips!

Open Daily 9AM 'til Sunset • May thru October

Don't settle for "you can't get there from here", explore all that Maine has to offer from one place, at Thomas Point Beach & Campground!



thomas point beach

Just off Rt. 1, Cook's Corner, Brunswick • 207-725-6009 • www.thomaspoinbeach.com

Check Out Our AWESOME 2021 Events!

**VACATIONLAND
VAG FAIR 2021!**
June 12th & 13th!
KUNG FU ~ LESPECIAL
**SUMMER JAM
CAMP OUT** **JULY 2nd - 5th**

MAINE FLY FISHING
**SUMMER
SHOWCASE**
JULY 10th
MAINE FOLK **July 16 - 18**
MAINEFOLK.COM

JULY 23-24
A CELEBRATION OF LIGHT



Green Woods
UNION & SALT LAKE

**AUG
6-8, 2021**

THE GRATEFUL CAMP OUT

AUG 13-15



HIGHLAND GAMES & SCOTTISH FESTIVAL

RETURNS!!

AUGUST 21, 2021!

Thomas Point Beach Bluegrass Festival

September 3, 4, 5 & 6!

All-Star 2021 Line-Up!

SAM BUSH

The DEL McCOURY BAND

STEEP CANYON RANGERS

The GIBSON BROTHERS

The PO' RAMBLIN' BOYS

JOE MULLINS & The RADIO RAMBLERS

MICHAEL CLEVELAND & FLAMEKEEPER

CHRIS JONES & The NIGHT DRIVERS

The BECKY BULLER BAND

HENHOUSE PROWLERS

AND MANY MORE!

Single and Multi-Day

Tickets Available online!

Camping and Electric Available!

Experience the MAGIC!

Maine's Premiere Bluegrass Festival
thomaspoinbeachbluegrass.com



Mitchell Field, Harpswell

1410 Harpswell Neck Road, Harpswell

Besides having music every summer Thursday night for their Bandstand by the Sea series, few other venues match its ease of parking, ocean views, walking trails and sunsets. It's a great place to bring a dog or your family to capitalize on the summer beauty of coastal Maine. And it is a fun spot to catch a great local show too!

Orion Performing Arts Center, Topsham

50 Republic Avenue, Topsham

Housed inside the Mt. Ararat Middle School, the Orion has the broadest scope of activities of any regional venue: you can see youth theater camp in the summer, student shows during the school year, magic shows, dance recitals, comedy shows, and this space serves as a resident venue for the Midcoast Symphony Orchestra four times per year. The space may also be rented by the public; the stage can accommodate even large acts. As of this guide printing the Orion was closed due to Covid-19 but expected to be open soon. Check out www.OrionPerformingArtsCenter.com for the latest updates.

Thomas Point Beach

29 Meadow Road, Brunswick

Although locals know it as a family friendly campground, Thomas Point Beach is famous as a mecca for bluegrass music annually during Labor Day weekend. There are smaller shows on this stage throughout the year, but all pales in comparison to the Bluegrass festival that has been going strong since 1979. Many of the leading bluegrass musicians have performed here.

Studzinski Recital Hall

12 Campus Road S., Bowdoin College, Brunswick

The Bowdoin International Music Festival is a premiere classical music series performed each summer featuring guest artists, instructors and youth performers honing their skills over a summers' worth of performances. Words like protégé get thrown around, but during the fifty plus years of the BIMF, many of the performing students have become prominent musicians. The Studzinski Recital Hall on the campus of Bowdoin College in Brunswick is the primary performance space holding the vast majority of BIMF events.

Waterfront Park & Patten Library Gazebo

61 Commercial Street and 33 Summer Street, Bath

The most active outdoor entertainment community in the Midcoast, Bath features two venues that offer performances three nights per week during the summer. The Patten Free Library Gazebo offers the Bath Community Swing Band shows on Tuesdays. Friday evenings bring an eclectic mix of different music stylings at the gazebo from local and regional musicians. On Saturdays, the larger main stage at Waterfront Park is the place to be as larger acts perform.




BRUNSWICK GOLF CLUB
"The HUB of Maine Golf"

- Midcoast Maine's Best Championship Golf Layout
- Open to the Public
- Restaurant Open 7 Days/Week, Great Outdoor Seating



www.brunswickgolfclub.com



**BRUNSWICK
NAVAL AVIATION
MUSEUM**





Preserving the 65 Year History of Hunting Submarines

Poised just hundreds of feet from the icy North Atlantic, with a legacy of over 65 years of relentless vigilance, Naval Air Station Brunswick, Maine, carved a unique place in US and Naval history and played a critical role in maritime patrol aviation world-wide. With important contributions during World War II, Vietnam and the Cold War, and with squadron deployments to Korea, the Far East, Europe, North Africa and the Middle East, tens of thousands of sailors trained and flew from Brunswick, often in harm's way and usually out of the limelight.

Did you serve aboard NASB?
 Join us at the 2021 Reunion Sep 17-19. Register online!

79 Admiral Fitch Avenue, Brunswick ME 04011
(207) 837 6511 | bnamuseum.org

See our website and Facebook page for current hours of operation and events during COVID



This ad proudly sponsored by Hannaford Supermarkets. Thank you to all of our Veterans.

Top 10 Places to Go for a Walk

(In reverse alphabetical order)

Whiskeag Trail, Bath

Distance: 5-mile biking and hiking trail **Difficulty:** Easy (Maine Trail Finder)

Trailhead: Congress Street, Bath

Description: A wilderness walk while still in town; the Bath bus system makes stops along the trail.

Walkable Downtowns: Brunswick, Bath, Wiscasset

Distance: Varies by downtown

Difficulty: Easy; all paved

Trailhead: Varies

Brunswick's Maine Street is highlighted by the Brunswick Mall on one end and Fort Andross on the shores of the Androscoggin River on the other.

Bath has a walking trail connecting nearly two dozen historical markers in a very walkable downtown. There is also a guided tour of ship captain's houses.

Wiscasset is a high-traffic downtown on popular coastal Route 1 highlighted by the downtown patrons walking towards the Sheepscot River to stand in line for nationally-featured Red's Eats, a local and wildly popular seafood stand.



Thorne Head Trail, Bath

Distance: 3.5-mile biking and hiking trail **Difficulty:** Easy-Moderate (Maine Trail Finder)

Trailhead: Upper High Street, Bath

Description: On the Kennebec Estuary Land Trusts 96-acres, this trail ties into the Whiskeag Trail.

Sprague Pond Preserve, Phippsburg

Distance: 5.5-mile hiking and snowshoeing trail **Difficulty:** Moderate (Maine Trail Finder)

Trailhead(s): 2, Basin Road, Phippsburg; Main road (Route 209), Phippsburg

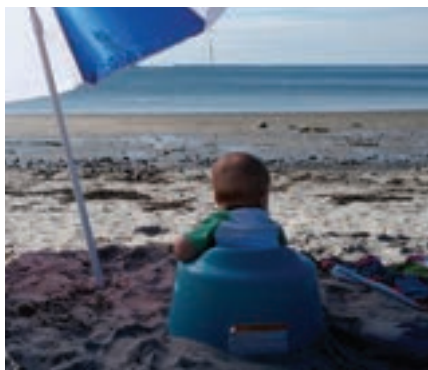
Description: A scenic walk on a dirt path highlighted by Skull Falls and Burnt Ledge (aka Pasture Ridge) which is one of the largest pitch pine woodlands in Maine.

Potts Point, Harpswell

Distance: 0.6-mile hiking trail **Difficulty:** Easy-Moderate (Maine Trail Finder)

Trailhead: Harpswell Neck Road/Route 123, Harpswell

Description: Parking is roadside (don't block the boat landing!) but you are rewarded with tidal pools and gorgeous views on this rocky ledge trail. It's a bit of an adventure.



Popham Beach State Park, Phippsburg

Distance: 2.4-mile hiking trail

Difficulty: Easy (Maine Trail Finder)

Trailhead(s): 2, Fort Baldwin Road, Phippsburg; Perkins Farm Lane, Phippsburg

Description: Completely a unique experience, this trail is not a loop but rather a 1.2 mile stretch of trail with ocean views everywhere you look and three historic forts to explore.

Morse Pond Trail & Carousel Trail, Georgetown

Distance: varies (network of trails); hiking & biking trails **Difficulty:** Unranked

Trailhead: Seguinland Road, Georgetown

Description: These trails are on Morse Pond Preserve and are located a quarter of a mile from the entrance of Reid State Park.

Cliff Trail, Harpswell

Distance: 2.3 miles for the main loop **Difficulty:** Moderate

Trailhead: Harpswell Town Office

Description: This is a rugged trail that includes a shore walk along tidal Strawberry Creek and spectacular views from 150-foot cliffs overlooking Long Reach. Unbroken preserved forest stretches to the east and south of Long Reach. In 2021 first half mile is under construction to make it ADA accessible but rest of the trail is open.

Cathance River Trails, Topsham

Distance: 2.0-mile hiking trail **Difficulty:** Moderate (Maine Trail Finder)

Trailhead: Cathance Road, Topsham

Description: This 2-mile stretch leads to a 60-foot aluminum bridge, which leads to 5 more miles of trails on the Cathance Preserve—a more challenging trail for more experienced hikers.

Androscoggin River Bike Path, Brunswick

Distance: 2.6-mile biking, dog walking and biking trail

Difficulty: Unranked

Trailhead(s): 3, Water Street and Grover Lane, Brunswick; Topsham via Merrymeeting Bridge

Description: Highly visible 14 ft. wide paved path that runs along Route 1 and features two dog parks.





Top Ten Places to Bring a Friend Who is Visiting

We asked our locals where they like to bring friends who visit, and they gave us over four dozen unique responses. Some of the responses were included in the other top 10 lists in this guide, but they were such popular answers, that they are included here too. Here are ten places to check out in no particular order.

Popham Beach, Phippsburg and Reid State Park, Georgetown

Bordering the south side of the mouth of the Kennebec River, Popham Beach State Park is truly one of Maine's rare geologic landforms. Sunbathers relaxing on Popham's sands can see Fox and Wood islands offshore, and the Kennebec and Morse Rivers border each end of the beach. Visitors can walk to Fox Island at low tide, but are warned to pay attention to the rising tides so as not to get marooned. (Popham was the highest vote getter- though I shouldn't tell you that--shhh).

Thousands of visitors enjoy Reid State Park's long, wide sand beaches like Mile and Half Mile, which are rare in Maine. Enjoyed as a recreational resource, the beaches are also essential nesting areas for endangered least terns and piping plovers and resting and feeding areas for other shorebirds. Rarer than beaches along Maine's coast are large sand dunes, like those at Reid.

Topsham Fair Mall, Topsham

Perhaps the most-recognized and by far the busiest business district in our area is the Topsham Fair Mall. With a prime location off I-295, the Topsham Fair Mall businesses pull customers from a 50-mile radius to fill all of their needs in one place. Whether it's home improvement, groceries, clothing, movies, or a variety of food options that you are looking for, you can find it in the nearly 60 businesses in this concentrated district.

Maine Maritime Museum, Bath and Museums in Brunswick

Experience Maine's seafaring history on the banks of the Kennebec River. Open year-round, their 20-acre waterfront campus includes indoor galleries, the country's only surviving historic wooden shipyard, a working boat shop and a newly-restored 1906 schooner. Hundreds of events take place each year, including classes for the public, lighthouse tours, bay tours, boat launches, and more. Maine Maritime has been voted numerous times as one of the top ten maritime museums in the world. Our region also has many other museums of note, including: Joshua L. Chamberlain Museum, Bowdoin College Museum of Art, Peary-MacMillan Arctic Museum, Pejepscot Historical Society, and the Brunswick Naval Museum & Gardens.

Classic Downtowns: Brunswick, Bath, Wiscasset

Filled with unique boutiques and some of the best restaurants in the region, Bath, Brunswick, and Wiscasset all had votes for their collective Main(e) Streets and for many individual businesses.

Brunswick's Maine Street is highlighted by the Brunswick Mall Gazebo green space on one end, and the Androscoggin River on the other. There are over three dozen restaurants on Maine Street with over half of those featuring ethnically-diverse menus.

Bath has a walking trail connecting nearly two dozen historical markers in their very walkable downtown, and even have a guided tour of ship captains' houses. You will discover a wealth of food and drink options including Bath Brewing Company, Kennebec Tavern & Marina, The Cabin, and Café Creme, who all received individual votes.

Wiscasset is a high-traffic downtown on popular coastal Route 1, highlighted by the downtown patrons walking towards Red's Eats, Sprague's Lobster, Sarah's and other downtown eateries. You can visit several historic homes, and even a "castle." With new parking lots and signage, this is becoming a popular place to pull off Route 1 and take a stroll.

Androscoggin Swinging Bridge, Brunswick-Topsham

Built in 1892, and fully restored in 2007, this is a pedestrian suspension bridge, built across the Androscoggin River. This bridge is known as a "swinging bridge." Once, it was the way for Topsham textile workers to get to their jobs at the Cabot Mill (now Fort Andross).

Land's End and Giant's Stairs, Harpswell

Land's End Gift Shop is found in Harpswell on Bailey's Island and it's easy to find- just go down Route 24 until you can't. For six decades this gift shop has been a highlight of many rocky coast explorers. With two floors, a wrap-around deck and constant warm coastal breeze, it's more than a shop, it's an experience.

For dramatic coastal scenery in Harpswell, nothing beats the Giant's Stairs. Named for its interesting geologic history, the Giant's Stairs trail follows the rocky coastline with gorgeous views of eastern Casco Bay, often with crashing waves glinting in the sunlight.

Fresh.
Local.
Organic.

MORNING
GLORY
NATURAL
FOODS

60 Maine Street | Brunswick, ME 04011
207.729.0546 | www.moglonf.com

*Celebrating
40 years!*



On any given day you might see rafts of ducks, foraging harbor seals, or a lobster boat hauling traps.

Frontier, Brunswick

To say Frontier is a restaurant is almost inaccurate at this point. It began as a restaurant but has evolved into a multi-use facility inside Fort Andross in downtown Brunswick. With a large bar, eclectic decorations, art on the walls, and large mill windows that overlook the river, Frontier is a regular meeting spot for many. However, they also have a theater that regularly shows niche films and arthouse pictures, and it is used for seminars and live performances. In 2018 they launched a café for those employees working in the other 60+ businesses inside the mill, and they even have a banquet room for weddings and parties.

Food on the Water- The Dolphin, Harpswell; Cook's Lobster & Ale House, Harpswell; Sebasco Harbor Resort, Phippsburg; Five Islands Lobster Co., Georgetown

Maine is known for our seafood, primarily lobster and oysters, but also clams, scallops, and more. As we say in our FAQ section, you can't go wrong with many restaurants in the area as they all have fresh seafood and they have been cooking it for years, because it's what we grew up on. Over a dozen restaurants received votes, but these three got numerous mentions and many people singled these out because they enjoy the experience of being close to the water when having this food. There really is something to having the sea air in your nose while you are enjoying your fresh catch.

Breweries- Flight Deck, Moderation, Bath Brewing Co., Black Pug Brewing, Trinken Brewing Co. and Maine Beer Company

Maine's beer industry has taken off in the last five years and Bath-Brunswick has become a haven for beer enthusiasts. A regular trip for many is to go on a brewery tour throughout Brunswick, Bath, and Freeport to hit all of these new breweries making decidedly different offerings. Flight Deck Brewing is in an old naval base property. Moderation Brewing actually produced the inauguration beer for Maine's Gubernatorial celebration in November 2020.

Brunswick Landing

The former Naval base in Brunswick, now called Brunswick Landing, is one of the most successful base revitalizations in the country. Announced in the 2005 round of closures, the closure took nearly six years to complete. In the decade since, it has been transformed into a thriving commercial center with national and international companies finding space on what locals call "The Landing". It's home to Wayfair, Molnlycke, Flight Deck Brewing, Wild Oats Bakery, Starc Systems, Avita of Brunswick and other local, national and internationally-known brands. The property is also still home to the Brunswick Executive Airport, Mere Creek Golf Course, the Brunswick Naval Aviation Museum & Memorial Gardens, a business incubator called TechPlace, miles of recreational trails, two senior living centers, the Brunswick Parks and Recreation Department, hundreds of residential houses/condos and over 100 businesses in total.



THE CARE YOU NEED, WHEN AND WHERE YOU NEED IT.

OFFERING FAST, EXPERT CARE FOR ALL KINDS OF NON-LIFE-THREATENING INJURIES & ILLNESSES:

- ANIMAL BITES & STINGS
- ASTHMA AND BRONCHITIS
- BURNS, CUTS & SCRAPES
- EAR INFECTIONS
- FEVER & FLU
- MIGRAINES
- MINOR FRACTURES
- RASHES
- SORE & STREP THROAT
- SPRAINS & STRAINS
- UPPER RESPIRATORY INFECTIONS
- VOMITING & DIARRHEA

PLUS PHYSICALS FOR SCHOOL AND WORK, FLU SHOTS, AND MORE!
No appointment needed!

OPEN TO EVERYONE,
EVERY DAY, FROM
8 AM - 8 PM AT THE
TOPSHAM FAIR MALL.

Maine

Urgent Care



MAINE'S FIRST ACCREDITED URGENT CARE

TO RESERVE YOUR SPACE, CHECK CURRENT WAIT TIMES, OR FOR MORE
INFORMATION, VISIT MAINEURGENTCARE.COM, OR CALL **(207) 798-6333**

Community PROFILES

Arrowsic

Settled in 1630, Arrowsic is a small island town, with about 427 residents. The town has no full-time employees and relies on volunteers to respond to emergencies, manage their natural resources, maintain town infrastructure, and serve on boards and committees. Volunteering is a way to get to know your neighbors, have fun, and get satisfaction from pitching in as part of democratic self-government. Arrowsic is bordered by the Kennebec, Sasanoa, and Back Rivers. The City of Bath lies across the Kennebec from them and they are very proud of their volunteer Fire Department.

Bath

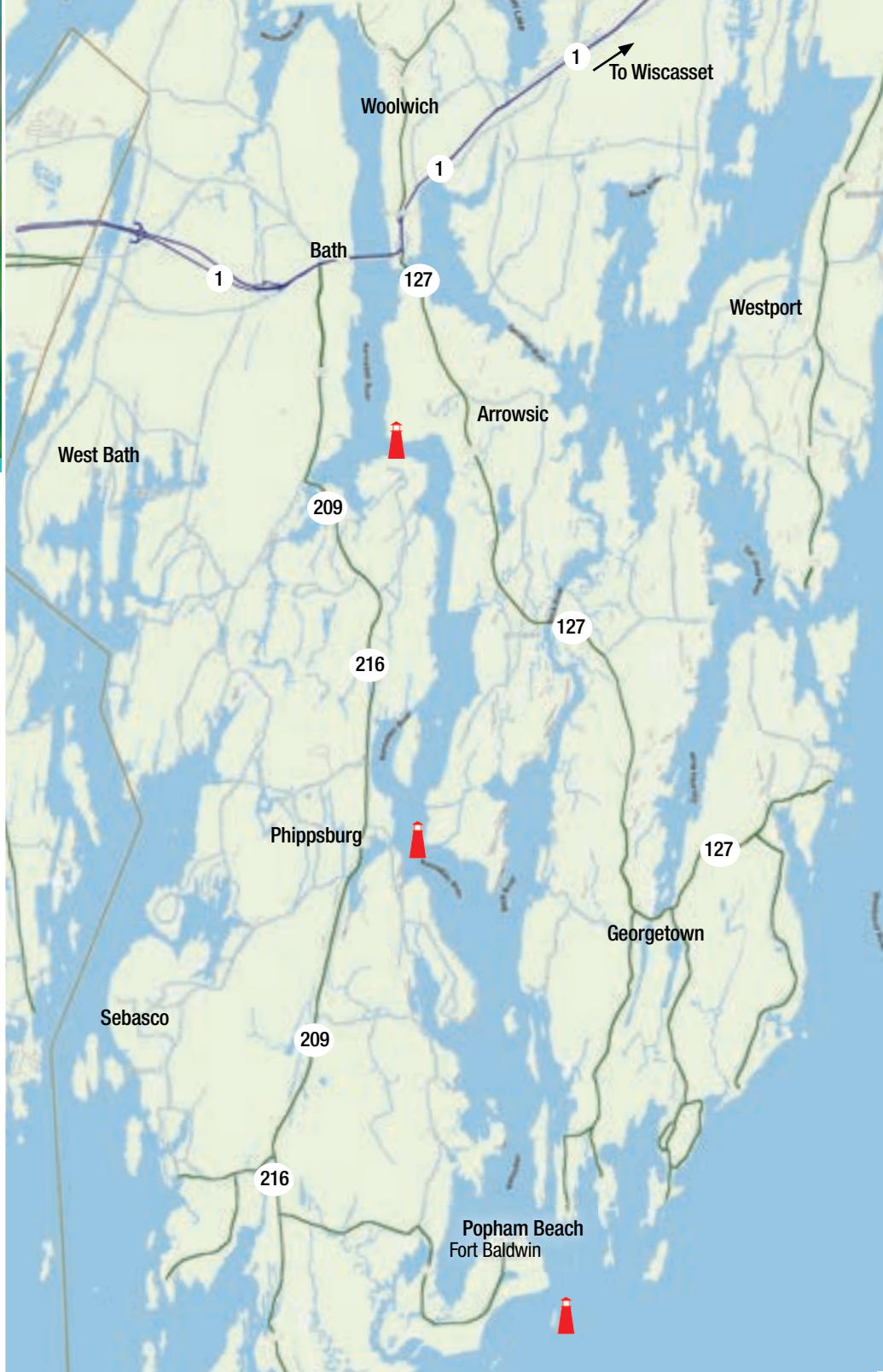
Population: 8,303 • Incorporated: 1781 (town) / 1847 (city)

The City of Ships is rich in maritime history and a sense of community. Downtown Bath offers a unique mix of specialty shops, galleries, antique stores, services, and restaurants, all of which cater to locals and visitors alike. Historical markers tell the stories of one of Maine's most well-preserved and thriving downtowns.



Enjoy a concert in one of the parks as you watch eagles and ospreys floating above the mighty Kennebec River or step back in time and walk Bath's tree-lined streets admiring both humble and grand examples of classic American architecture.

Visit Maine Maritime Museum to experience Bath's shipbuilding past and learn about Bath's present as home to Bath Iron Works, the 4th-largest employer in Maine, and builders of the U.S. Navy's Zumwalt-class stealth destroyers.





Community Profiles

Bowdoin

With a population around 3,000 people depending on the day, Bowdoin is home to three dozen businesses and was incorporated in 1788. Prone to population fluctuations, Bowdoin is a community beginning to see a higher housing demand as people are searching for rural homes that are within an easy drive to the denser commerce centers in the region.

Bowdoinham

With slightly less residential population but nearly twice the number of businesses as Bowdoin, Bowdoinham is beginning to get involved in more community events each year. An active community spirit prevails, as they highlight a different business and organization weekly on their town website.

Brunswick

Population: 20,278 • Incorporated: 1739

New England charm mixed with a thriving arts and entertainment culture. Visitors to Brunswick's picturesque downtown can explore numerous ethnically diverse restaurants, distinctive retail shops, a year-round Farmers' Market, summer musical theater, and a wide variety of cultural offerings at the town's many theaters, galleries, museums, and festive community events.



The largest community in the Southern Midcoast Maine region in terms of both residential population and number of businesses, Brunswick is home to the most robust transportation options in the region, (including the Amtrak Downeaster train that goes to Boston five times daily) a diverse business mix, dozens of local non-profits, and the most prestigious educational institution in the region, Bowdoin College. The former U.S. Navy Base has become a thriving business complex itself, called Brunswick Landing, and is home to over 100 businesses and 1800+ employees.

Brunswick's parks, public spaces, river access, and wooded trails, provide four seasons of endless opportunities for residents and visitors of all ages to live an active lifestyle.



Topsham Fair Mall

Topsham Fairground

Topsham

295

Brunswick

Bowdoin College

123

H

Cooks Corner

H

Brunswick Landing

24

West Bath

123

Great Island
(Sebascodegan)

24

24

Harpswell Center

123

Harpswell

Cundy's Harbor

123

Orrs Island

Harpswell Neck

Cribstone Bridge

Bailey Island



Community Profiles

Dresden

On the very edge of the region lies Dresden, a primarily residential community in close proximity to US Route 1 and Wiscasset. Incorporated in 1794, it is home to 1,672 residents who mostly work in Wiscasset or in the Kennebec Valley region, as they are a 20-minute drive from Gardiner and 30 minutes from Augusta, the state capital.

Edgecomb

Renowned for its beautiful views and rocky shores, Edgecomb is a community of just under 1,300 residents. Their website fittingly states that they are 'situated between sunrises on the Damariscotta River and sunsets on the Sheepscot River.' Find a replica Colonial-era wooden fort to explore in Edgecomb.

Georgetown

Home to the renowned Reid State Park, this island community is famous for its natural splendor and bird watching. Many residents are seasonal, but the few year-round residents- approximately 1,000 in total- are primarily boat builders, fishermen, or artists. A dozen or so destination businesses call Georgetown home.

Harpswell

Population: 4,740 • Incorporated: 1758

A quintessential rocky-coast-of-Maine community and popular tourist destination for over 100 years, featuring glorious ocean views, working harbors, marinas, walking trails, art galleries, and a wide variety of restaurants and lodging. Harpswell is comprised of two peninsulas that reach out into the ocean like fingers. One peninsula is completely land while the other peninsula is comprised of three large islands connected by bridges, thus creating one of the most scenic drives in Maine.

The Cribstone Bridge, a one-of-a-kind engineering marvel built in 1927, connects Orr's Island to Bailey Island. Cundy's Harbor on Great Island (Sebangcodegan), is a charming fishing village. All three islands get referred to by their own names, but all are within Harpswell.

Summer activities in Harpswell include boat cruises, concerts at the Bandstand by the Sea, climbing on rocks at the Giant's Stairs, and watching the sun rise and set over the ocean.



IRISH BYRNES PUBS

Established March 17th 2008

Good Food,
Good Drink,

And Always a
Good Time!

**Live Music • Trivia Nights
Irish Breakfast on Sunday**

38 Centre Street ■ Bath (207) 443-6776
16 Station Avenue ■ Brunswick
Outdoor Seating (207) 729-9400

www.byrnesirishpub.com
email: meetme@byrnesirishpub.com





LATITUDE 43° 45' 1"





**FROM CLASSIC TO CONTEMPORARY
FROM MAINE BOILED LOBSTER
TO MAINE CRAFT BEER**

You can get it all here at

Cook's
Lobster & Ale House
Est. 1993
 Bailey Island, ME

Where all great things come together for one
amazing experience!

COOKSLOBSTER.COM

LONGITUDE -69° 59' 32"



Community Profiles

Phippsburg

A destination all its own, Phippsburg is highlighted by Popham Beach State Park. It's known for its tourism-related businesses that cater to those looking for a coastal getaway. The business mix of Phippsburg is 80% tourism-based with campgrounds, inns, restaurants, resorts, cottages, and chartered boat tours highlighting the activities and capitalizing on the natural beauty found here. Just ten minutes from downtown Bath, it feels like worlds away from the city, which is why 2,200 residents are happy to call it home.

Richmond

The northernmost community of the Southern Midcoast region, Richmond is home to many unique businesses. With 3,800 residents and growing, Richmond is geographically-appealing as they are within a 30-mile radius of 350,000 Mainers, which is nearly 1/3 of the entire state. This location, along with a renewed community spirit, has made Richmond a community that relocating citizens and commercial developments are beginning to target. Additionally, Swan Island is the backdrop of the downtown with the access bridge just outside the heart of Main Street and several docks in the downtown for water access. Swan Island is known for miles of hiking trails and incredible bird watching opportunities.

Topsham

Population: 8,784 • Incorporated: 1764

The second-largest community in the region, Topsham continues to have steady business growth in both the Topsham Fair Mall area off I-295 and the rehabilitated Bowdoin Mill Complex on the banks of the Androscoggin River. Topsham boasts the only fairgrounds in the region, which is home to the Topsham Fair, and many annual events. Topsham is one of the two communities in our region with a brand new high school (Mt. Ararat in Topsham, and Morse High School in Bath).

Historically a mill town, Topsham has the Androscoggin and Cathance Rivers, which powered sawmills and other industries including a pottery maker, a watch factory, a pitchfork factory, tanneries, marble works, and two feldspar quarries. Today, Topsham is home to farms, retirement communities, and nature preserves with riverside walking trails.



West Bath

Larger than many expect, West Bath has 1,877 year-round residents and is located on US Route 1 between Brunswick and Bath. With this location, many find it conveniently located in proximity to the larger service centers, though West Bath does have a number of its own services, including a volunteer fire department, a courthouse, and their own elementary school.

Westport Island

The second smallest community in the region, Westport Island has just under 800 residents and is situated in the middle of Sheepscot Bay. A traditional destination for farming and fishing, most residents are retirees, young families who enjoy solitude, or those who make a living on the water.

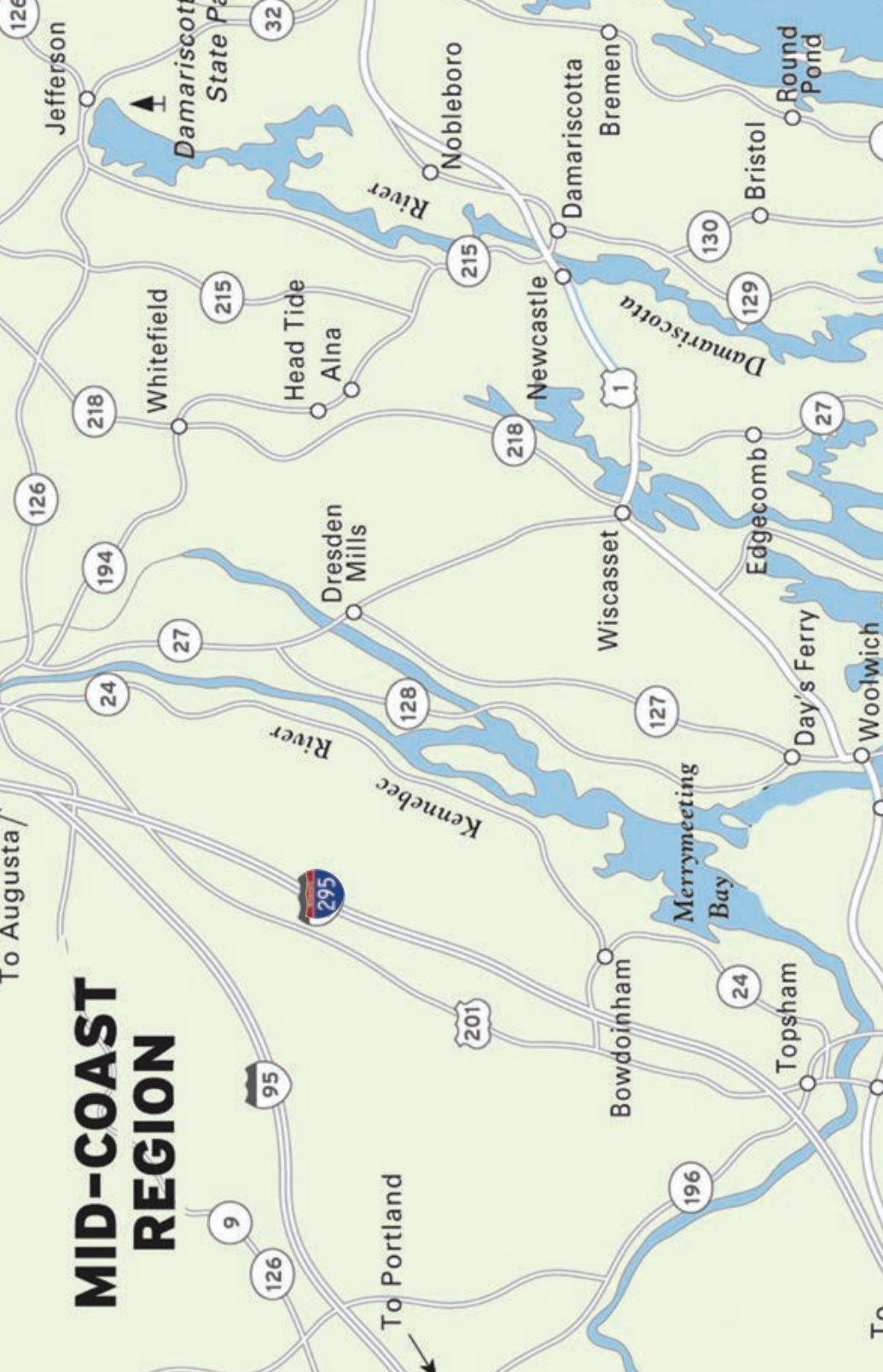
Wiscasset

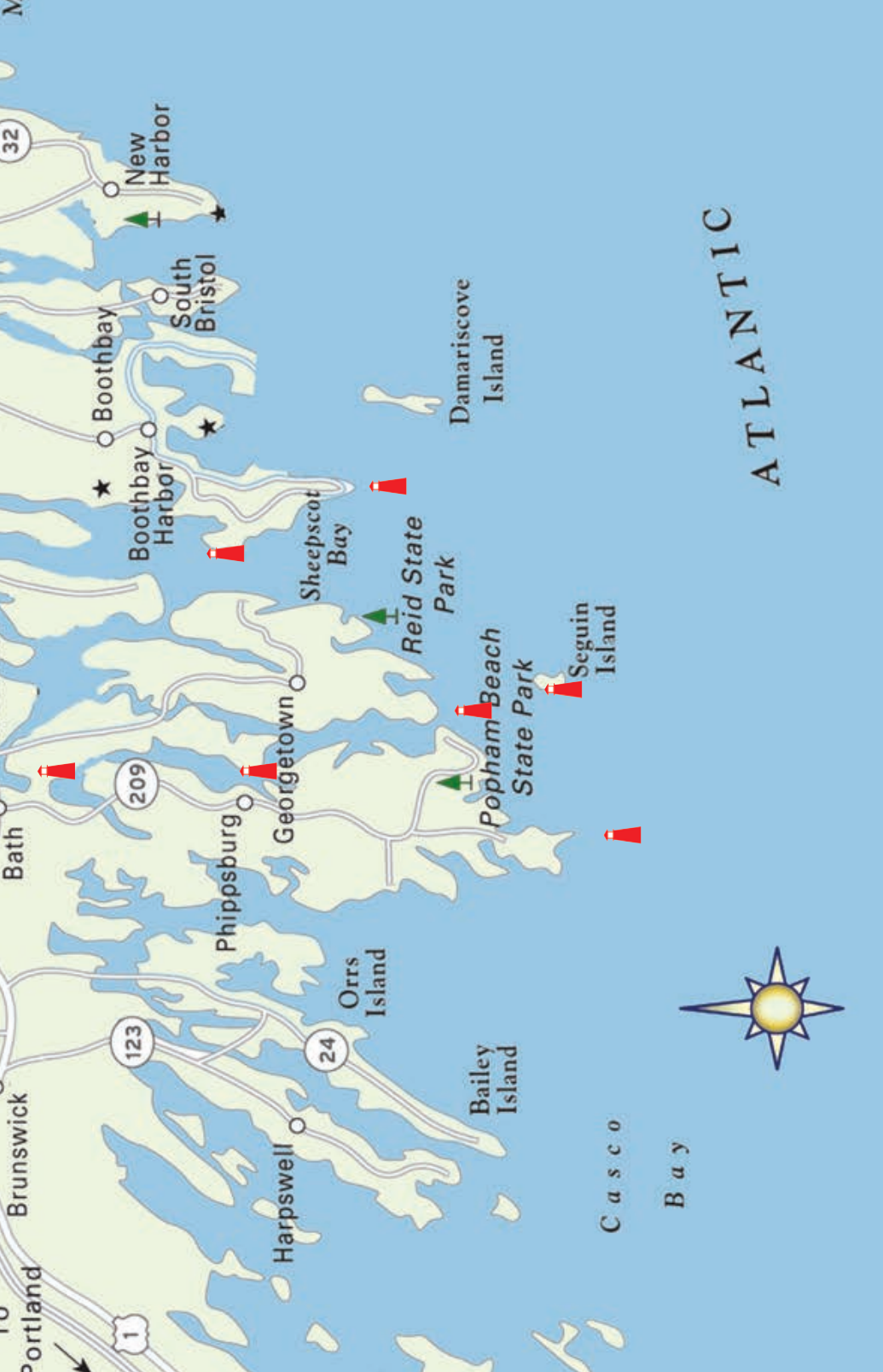
A thriving community on US Route 1, Wiscasset has its own local chamber of commerce that initiates many events and activities in their region. With 3,732 residents, Wiscasset also has its own high school and a nice business mix. Red's Eats has been featured on several national travel shows and lines for their lobster rolls in the summertime will regularly extend down the block. The downtown is bustling with traffic year-round and the entire community participates in the events they run.

Woolwich

Just after the bridge in Bath for those traveling north on US Route 1, is Woolwich, a community of 3,100 residents. Settled in 1638 and incorporated in 1759, Woolwich is mostly a residential community renowned for its abundance of coastline, and is a popular destination for retirees. About 30 companies do business in Woolwich, with The Taste of Maine Restaurant on Route 1 being the most well-known due to both their food and the giant lobster on their roof. But no business discussion is complete in Woolwich without recognizing Reed & Reed general contractors, the largest employer in town, and known throughout the Midcoast region for their many construction and municipal projects.

MID-COAST REGION





Portland

Brunswick

Bath

32

1

123

209

24

Boothbay

Boothbay Harbor

South Bristol

New Harbor

Phippsburg

Georgetown

Harpswell

Orrs Island

Bailey Island

Sheepscot Bay

Reid State Park

Popham Beach State Park

Damariscove Island

Seguin Island

Casco Bay

ATLANTIC

Eat!

(Restaurants/Cafes)

B-Breakfast, R-Brunch, L-Lunch, D-Dinner
S-Snacks, Be-Beer, W-Wine, Lq-Liquor,
C-Coffee, P-Pastry

	Food Served/Services	Price Range	Open Year Round	Meals Served	Maine Lobster Options	Vegetarian/Gluten Free	Outdoor Dining	Live Entertainment	On Water/Water Views	Bar/Lounge	Kids Menu	Takeout	Catering	Large Groups Welcome	Reservations Accepted
Amato's Sandwich Shops, Inc. 111 Centre Street, Bath, ME 04530 www.amatos.com (207) 442-9600	Sandwiches Caterers	\$	•	LD	•	•						•	•	•	
Amato's Sandwich Shops, Inc. 148 Pleasant St., Brunswick, ME 04011 www.amatos.com (207) 729-5514	Sandwiches Caterers	\$	•	LD		•						•	•	•	
Bangkok Garden Restaurant 14 Maine Street, Brunswick, ME 04011 www.bangkokgardenrestaurant.com (207) 725-9708	Thai	\$\$	•	LD		•				Be,W		•			
Blueberries 4 Bowdoin Mill Island, Topsham, ME 04086 www.blueberriesfood.com (207) 725-5100	American (New) Mexican	\$	•	B,R,L		•						•	•		
Bombay Mahal 99 Maine Street, Brunswick, ME 04011 www.bombaymahal.com (207) 729-5260	Indian	\$\$	•	R,LD		•	•			Be,W		•	•	•	•
Buffalo Wild Wings 105 Topsham Fair Mall Rd., Topsham, ME 04086 www.buffalowildwings.com (207) 844-5800	Chicken Wings Sports Bar American (Traditional)	\$\$	•	LD		•				•	•	•	•	•	
Byrnes Irish Pub - Bath 38 Centre Street, Bath, ME 04530 www.byrnesirishpub.com (207) 443-6776	Irish Pub	\$\$	•	LD		•		•		•		•	•	•	•
Byrnes Irish Pub - Brunswick 16 Station Ave, Brunswick, ME 04011 www.byrnesirishpub.com (207) 729-9400	Irish Pubs	\$\$	•	LD		•	•	•		•	•	•	•	•	•
Cook's Lobster & Ale House 68 Garrison Cove Rd., Bailey Island, ME 04003 www.cookslobster.com (207) 833-2818	Seafood, American (New) Steakhouse	\$\$	•	LD		•	•	•	•	•	•	•	•	•	•
Dolphin Marina & Restaurant 515 Basin Point, Harpswell, ME 04079 www.thedolphin.me (207) 833-6000	Seafood, Farm-and-Sea to-Table Local, Wild	\$\$		LD		•	•	•	•	•	•	•	•	•	•
Dunkin Donuts 104 Pleasant Street, Brunswick, ME 04011 www.dunkindonuts.com (207) 725-0066	Donuts Coffee, Tea	\$	•	B,L		•						•	•	•	
Flight Deck 11 Atlantic Avenue, Brunswick, ME 04011 www.flightdeckbrewing.com (207) 504-5133	Brewery	\$\$	•	S		•	•	•		•	•	•	•	•	•
Frontier Café, Cinema and Gallery 14 Maine Street, Mill 3 Fort Andross Brunswick, ME 04011 www.explorefrontier.com (207) 725-5222	Cinema Vegetarian American Pub Food	\$\$	•	LD		•		•	•	•	•	•	•	•	•
Linda Beans Maine Kitchen and Topside Tavern 88 Main Street, Freeport, ME 04032 www.lindabeansperfectmaine.com (207) 865-9835	Seafood Breakfast (Summer)	\$\$	•	B,LD		•	•	•		•	•	•	•	•	
Modertion Brewing 103 Maine Street, Brunswick, ME 04011 www.moderationbrewing.com (207) 406-2112	Brewery	\$\$	•				•			•					
Pat's Pizza of Brunswick 112 Pleasant Street Brunswick, ME 04011 www.patsbrunswick.com (207) 844-8163	Pizza, American (Traditional)	\$\$	•	LD		•	•			•	•	•	•	•	•

Eat!

(Restaurants/Cafes)

B-Breakfast, R-Brunch, L-Lunch, D-Dinner
S-Snacks, Be-Beer, W-Wine, Lq-Liquor,
C-Coffee, P-Pastry

	Food Served/Services	Price Range	Open Year Round	Meals Served	Maine Lobster Options	Vegetarian/Gluten Free	Outdoor Dining	Live Entertainment	On Water/Water Views	Bar/Lounge	Kids Menu	Takeout	Catering	Large Groups Welcome	Reservations Accepted
Pepper's Landing 147 Bath Road, Brunswick, ME 04011 www.pepperslanding.com (207) 844-8847	Seafood, Local, Craft Beer, Family Friendly	\$\$	•	L,D	•	•	•	•	•	•	•	•	•	•	•
Richard's Restaurant 115 Maine Street, Brunswick, ME 04011 www.richardsgermanamericancuisine.com (207) 729-9673	German, American (Traditional)	\$\$	•	R,L,D	•	•	•	•	•	•	•	•	•	•	•
Sea Dog Brewing Co. 1 Bowdoin Mill Island, Topsham, ME 04086 www.seadogbrewing.com (207) 725-0162	Seafood Brewpub Burgers	\$\$	•	R,L,D	•	•	•	•	•	•	•	•	•	•	•
The Cabin 552 Washington Street, Bath, ME 04530 www.cabinpizza.com (207) 443-6224	Pizza	\$\$	•	L,D	•	•	•	•	Be,W	•	•	•	•	•	•
The Dairy Frost LLC 107 Bath Road, Brunswick, ME 04011 (207) 729-6720	Ice Cream Frozen Yogurt	\$	•	•	•	•	•	•	•	•	•	•	•	•	•
The Taste of Maine Restaurant 161 Main Street, Woolwich, ME 04579 www.tasteofmaine.com (207) 443-4554	Seafood Vegan American (Traditional)	\$\$	•	L,D	•	•	•	•	•	•	•	•	•	•	•
Wild Oats Bakery and Cafe 166 Admiral Fitch Avenue Brunswick, ME 04011 www.wildoatsbakery.com (207) 725-6287	Café Bakery Deli	\$- \$\$	•	B,R,L, D,S,C, P	•	•	•	•	•	•	•	•	•	•	•





**OLIVE OIL & BALSAMIC VINEGAR
TASTING ROOMS**

Come In And Taste For Yourself

Definitively Healthy, Freshest Products!



8 Rodick Pl. 503 Main St. 88 Main St. 90 Maine St. 640 Congress St. www.FIOREoliveoils.com
Bar Harbor Rockland Freeport Brunswick Portland info@FIOREoliveoils.com



*Visit Wiscasset's historic
homes*

Castle Tucker and Nickels-Sortwell House

For open hours and tickets, go to
HistoricNewEngland.org/visit

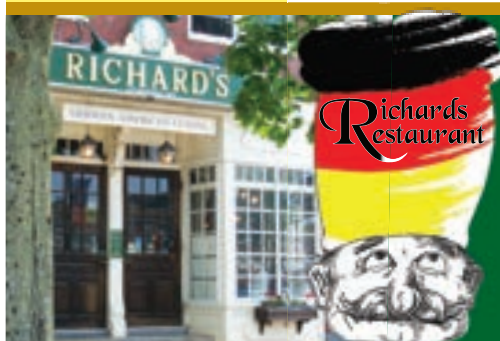


OUTDOOR DINING • FRESH LOCAL SEAFOOD • DAILY SPECIALS



Cook's Corner
147 Bath Road
Brunswick, ME
(207) 844-8847

WWW.PEPPERSLANDING.COM



German- American Cuisine

Restaurant & Lounge
115 Maine Street • Brunswick, ME
207-729-9673

Please call or visit Facebook
for current hours of operation,
we appreciate your patience.

Dinner Reservations Recommended

SEA DOG BREWING CO.



AWARD-WINNING CRAFT BEER
& CREATIVE PUB FARE!

In Topsham
Serving lunch, dinner,
late night & kid's menu too!

1 Bowdoin Mill Island
Topsham, ME.
(207) 725-0162

seadogbrewing.com

the Great Impasta



Monday – Saturday from 11am to 8pm

dine in, take out, patio seating, and delivery available



42 MAINE STREET, BRUNSWICK, MAINE 04011
207-729-5858 | www.thegreatimpasta.com



Stay

(Hotels/Motels)

	Price Range	Open Year Round	Breakfast Included	Wi-Fi in Room	On Water/Water Views	Swimming Pool	Hot Tub	Fitness Facility	Kitchenette Option	Restaurant	Meeting Room	Pet Friendly	Spa Services Onsite	Boat Access	Cribs Available	Fireplace in Room	Air Conditioning
Bailey Island Motel 1951 Harpswell Islands Rd., Rt. 24 Bailey Island, ME 04003 www.baileyislandmotel.com (207) 833-2886	\$\$			•	•				•								
Bath Area B&B Association 926 Cundy's Harbor Road, Harpwell, ME 04079 www.midcoastmaineinns.com (207) 725-0979	\$ - \$\$			•	•									•			•
Best Western Plus Brunswick Bath 71 Gurnet Road, Brunswick, ME 04011 www.brunswickmainehotel.com (207) 725-5251	\$\$	•	•	•		•	•	•	•			•			•	•	•
Black Lantern Bed and Breakfast 57 Elm Street, Topsham, ME 04086 www.blacklanternbandb.com (207) 725-4165	\$\$	•	•	•	•											•	•
Cook's Island View Motel, LLC 2041 Harpswell Islands Rd, Bailey Island, ME 04003 www.cooksislandmotel.com (207) 833-7780	\$\$			•	•	•			•		•	•					•
Day's Inn by Wyndham- Bath Brunswick Area 224 Bath Road-Cook's Corner, Brunswick, ME 04011 www.wyndhamhotels.com/days-inn (207) 725-8883	\$\$	•	•	•				•				•			•		•
Fairfield Inn and Suites by Marriott 36 Old Portland Road, Brunswick, ME 04011 www.marriott.com/hotels (207) 721-0300	\$\$	•	•	•		•		•			•				•		•
Hampton Inn Bath/Brunswick 140 Commercial Street, Bath, ME 04530 www.hamptoninn3.hilton.com (207) 386-1310	\$\$	•	•	•	•	•	•	•			•			•	•		•
Harbour Towne Inn on The Waterfront 71 Townsend Ave., Boothbay Harbor, ME 04538 www.harbourtowneinnc.com (207) 633-4300	\$\$ - \$\$\$	•	•	•	•				•								•
Head Beach Campground and Cottages 612 Small Point Rd., Phippsburg, ME 04562 www.headbeach.com (207) 389-1666	\$				•				•			•			•		•
The Inn at Bath 969 Washington Street, Bath, ME 04530 www.innatbath.com (207) 443-4294	\$\$	•	•	•			•					•				•	•
Kennebec Inn Bed and Breakfast 696 High Street, Bath, ME 04530 www.kennebecinn.com (207) 443-5324	\$\$	•	•	•		•											•
Log Cabin & Island Inn 5 Log Cabin Road, Bailey Island, ME 04003 www.logcabin-maine.com (207) 833-5546	\$\$	•	•	•	•	•	•		•	•	•						•
MaineStay Vacations 1624 Harpswell Islands Rd., Orr's Island, ME 04066 www.mainestayvacations.com (207) 833-5337	\$\$ - \$\$\$		•		•	•	•	•	•				•		•		
Moonlight Inn 215 Pleasant Street Brunswick, ME 04011 www.moonlightinneme.com (207) 729-9991	\$	•	•	•		•											•

Stay

(Hotels/Motels)

	Price Range	Open Year Round	Breakfast Included	Wi-Fi in Room	On Water/Water Views	Swimming Pool	Hot Tub	Fitness Facility	Kitchenette Option	Restaurant	Meeting Room	Pet Friendly	Spa Services Onsite	Boat Access	Cribs Available	Fireplace in Room	Air Conditioning
Relax Inn 133 Pleasant Street Brunswick, ME 04011 www.relaxinnme.com (207) 725-8761	\$\$	•	•	•		•			•		•						•
Residence Inn Bath/Brunswick 139 Richardson St. Bath, ME 04530 www.marriott.com/hotels (207) 443-9741	\$\$	•	•	•		•	•	•	•		•	•					•
Sagadahoc Bay Campground 9 Molly Point Lane Georgetown, ME 04548 www.sagbaycamping.com (207) 371-2014	\$\$			•	•				•			•					
Sea Escape Cottages 23 Sea Escape Lane Bailey Island, ME 04003 www.seaescapecottages.com (207) 833-5531	\$\$			•	•				•			•		•		•	
Sebasco Harbor Resort 29 Kenyon Road Sebasco Estates, ME 04565 www.sebasco.com 1 (877) 927-8152	\$\$	•	•	•	•	•	•	•	•		•	•	•		•	•	•
The Brunswick Hotel and Tavern 4 Noble Street Brunswick, ME 04011 https://www.thebrunswickhotelandtavern.com/ (207) 837-6565	\$\$	•		•				•	•	•	•	•					•
The Brunswick Inn 165 Park Row Brunswick, ME 04011 www.thebrunswickinn.com (207) 729-4914	\$\$	•	•	•	•				•	•							•
The Mooring B and B 132 Seguinland Road Georgetown, ME 04548 http://themooringb-b.com/ (207) 371-2790 / (866)-828-7343	\$\$		•	•	•												•
Travelers Inn 130 Pleasant Street Brunswick, ME 04011 www.travelersinnme.com (207) 729-3364	\$	•	•	•								•					•
Your Island Connection, LLC 7 Aaron's Way Bailey Island, ME 04003 www.mainerentals.com (207) 833-7779	\$\$ - \$\$\$		•		•	•							•		•		



Discover Harpswell...

Come for a day, stay for a lifetime!

216 Miles of Pristine coastline jutting into Casco Bay.

10 miles from Brunswick along Route 123 & 24.

Where bridges connect the mainland to a string of islands for great seafood,
ocean fun & authentic coastal living. Harpswell...Including Bailey Island,
Cundy's Harbor, Great Island, Harpswell Neck & Orr's Island.

Harpswell Business Association

PO Box 125

Harpswell, ME 04079

HarpswellMaine.org

Harpswell Town Office

263 Mountain Road

Harpswell, ME 04079

Harpswell.Maine.gov



9 Luxurious Overnight Accommodations
All with Panoramic Ocean Views

www.LogCabin-Maine.com

on Bailey Island

Sea Escape Cottages & Charters **Schooner Alert - Windjammer Cruises**



YOUR ISLAND CONNECTION

Specializing in Coastal Maine Vacation Rentals

**Offering over 70 Vacation Homes
& Cottages to Choose From!**



207-833-7779 - www.mainerentals.com



FOLLOW YOUR DREAM, HOME.

WE ARE ENGEL & VÖLKERS.

Visit us online **cascobay.evrealstate.com** or at a shop near you
and let us help you **follow your dream, home.**

Engel & Völkers Casco Bay * +1 207-833-0500 * +1 207-729-5900



ENGEL & VÖLKERS



VACATION RENTAL HOMES
in Beautiful Harpswell, Maine



Long Time No Sea...
We Can Fix That



www.mainestayvacations.com 207-833-5337

Relax Inn Efficiency Units

- Highspeed wireless Internet in All Rooms
- Direct TV
- Hair dryers, Microwave & Fridge
- A/C
- AM/FM Alarm Clock Radio
- Telephones
- Iron/Ironing Board
- Laundry Facilities
- Continental Breakfast

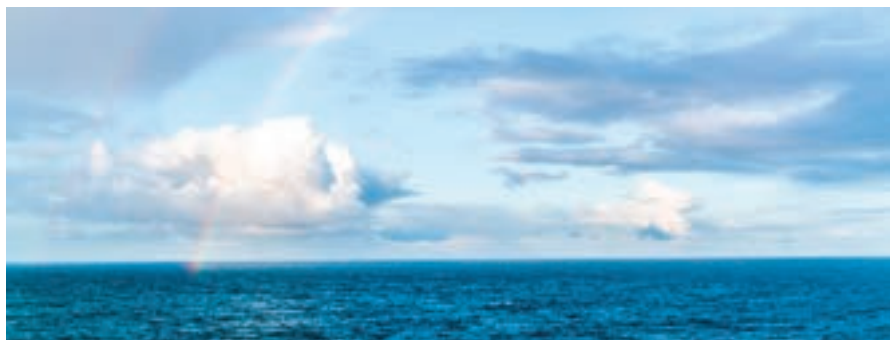
207-725-8761
info@relaxinnme.com
www.relaxinnme.com

133 Pleasant St. (Rte. 1) Brunswick
 (1 mile from Bowdoin / 10 minutes from Freeport & L.L. Bean)

Travelers Inn
 130 Pleasant Street
 Brunswick, Maine
 04011

Gateway to Mid Coast of Maine
*37 Guest Rooms Two Diamond AAA Approved
 Continental Breakfast • Direct TV w/ Showtime
 Highspeed wireless Internet Business Center
 Fridge & Microwave • Ironing Boards & Irons
 Hair dryers • Guest Laundry • L.L. Bean Outlet
 Shopping • Bowdoin College only a short drive away*

207-729-3364 Toll Free 800-457-3364
www.travelersinnme.com



H **Harbour Towne Inn**
on the waterfront

*Convenient, quiet location, right on the harbor.
 Just steps to downtown's art galleries, shops, restaurants
 and boating excursions.*

71 Townsend Ave., Boothbay Harbor, ME 04538 • 207.633.4300
www.harbourtowneinn.com • info@harbourtowneinn.com





Off-Peak and Peak Driving Hours and Time-frames

Driving times in the Midcoast vary by time of year and time of day. This driving time matrix shows both distance and travel time parameters for **off-peak** and **peak travel times**. Along Coastal Route 1, peak travel hours are typically 11 a.m. to 4 p.m. In larger urban areas such as Portland or Augusta, expect more typical weekday peak traffic hours.

Coastal Route 1 provides access to the peninsulas and many of the islands of the midcoast. The driving distance from Coastal Route 1 to destinations on the peninsulas is typically 15 miles, but the driving time is 30 minutes.

Navigation systems may not take variations in speed limits and local peak traffic times into account when calculating travel times. Be sure to allow in advance of a scheduled tour. extra time for parking in advance of a scheduled tour.

Location	Augusta	Bath	Boothbay Harbor	Brunswick	Freeport	Harpwell Neck	Pemaquid Pt. Lighthouse	Popham Beach	Portland Head Light	Portland Waterfront	Reid State Park	Topsham Fair Mall	Wiscasset
Augusta, Maine State Capital	50 miles 75-90 min.	40 miles 45-60 min.	24 miles 40-60 min.	32 miles 45-70 min.	10 miles 15-25 min.	25 miles 40-50 min.	54 miles 90-110 min.	49 miles 80-110 min.	55 miles 80-105 min.	6 miles 20-30 min.	49 miles 60-80 min.	24 miles 35-40 min.	21 miles 35-45 min.
Bailey Island & Orr's Island via Route 24	50 miles 75-90 min.	40 miles 45-60 min.	24 miles 40-60 min.	32 miles 45-70 min.	10 miles 15-25 min.	25 miles 40-50 min.	54 miles 90-110 min.	49 miles 80-110 min.	55 miles 80-105 min.	6 miles 20-30 min.	49 miles 60-80 min.	24 miles 35-40 min.	21 miles 35-45 min.
Bath Downtown	40 miles 45-60 min.	24 miles 40-60 min.	32 miles 45-70 min.	10 miles 15-25 min.	25 miles 40-50 min.	54 miles 90-110 min.	49 miles 80-110 min.	49 miles 80-110 min.	55 miles 80-105 min.	6 miles 20-30 min.	49 miles 60-80 min.	24 miles 35-40 min.	21 miles 35-45 min.
Boothbay Harbor Downtown via Rt. 27	40 miles 75-105 min.	24 miles 40-60 min.	32 miles 45-70 min.	10 miles 15-25 min.	25 miles 40-50 min.	54 miles 90-110 min.	49 miles 80-110 min.	49 miles 80-110 min.	55 miles 80-105 min.	6 miles 20-30 min.	49 miles 60-80 min.	24 miles 35-40 min.	21 miles 35-45 min.
Brunswick Downtown	33 miles 40-50 min.	9 miles 10-25 min.	42 miles 60-90 min.	14 miles 25-35 min.	50 miles 80-115 min.	54 miles 90-110 min.	49 miles 80-110 min.	49 miles 80-110 min.	55 miles 80-105 min.	6 miles 20-30 min.	49 miles 60-80 min.	24 miles 35-40 min.	21 miles 35-45 min.
Freeport Downtown, L.L.Bean	40 miles 40-55 min.	19 miles 25-35 min.	45 miles 80-105 min.	14 miles 25-35 min.	50 miles 80-115 min.	54 miles 90-110 min.	49 miles 80-110 min.	49 miles 80-110 min.	55 miles 80-105 min.	6 miles 20-30 min.	49 miles 60-80 min.	24 miles 35-40 min.	21 miles 35-45 min.
Harpwell Neck via Rt. 123	47 miles 70-100 min.	22 miles 35-50 min.	45 miles 80-105 min.	14 miles 25-35 min.	50 miles 80-115 min.	54 miles 90-110 min.	49 miles 80-110 min.	49 miles 80-110 min.	55 miles 80-105 min.	6 miles 20-30 min.	49 miles 60-80 min.	24 miles 35-40 min.	21 miles 35-45 min.
Pemaquid Point Lighthouse, Bristol	47 miles 75-110 min.	33 miles 60-90 min.	32 miles 65-85 min.	41 miles 70-100 min.	50 miles 80-115 min.	54 miles 90-110 min.	49 miles 80-110 min.	49 miles 80-110 min.	55 miles 80-105 min.	6 miles 20-30 min.	49 miles 60-80 min.	24 miles 35-40 min.	21 miles 35-45 min.
Popham Beach in Phippsburg via Rt. 209	54 miles 75-105 min.	16 miles 30-45 min.	40 miles 65-90 min.	23 miles 40-55 min.	33 miles 50-60 min.	37 miles 65-80 min.	54 miles 90-110 min.	49 miles 80-110 min.	55 miles 80-105 min.	6 miles 20-30 min.	49 miles 60-80 min.	24 miles 35-40 min.	21 miles 35-45 min.
Portland Head Light & Fort Williams Park, South Portland	61 miles 75-105 min.	50 miles 60-80 min.	63 miles 90-120 min.	32 miles 45-60 min.	23 miles 40-55 min.	37 miles 65-80 min.	54 miles 90-110 min.	49 miles 80-110 min.	55 miles 80-105 min.	6 miles 20-30 min.	49 miles 60-80 min.	24 miles 35-40 min.	21 miles 35-45 min.
Portland Waterfront	56 miles 60-80 min.	45 miles 75-90 min.	58 miles 75-90 min.	26 miles 30-60 min.	18 miles 20-45 min.	42 miles 60-80 min.	67 miles 85-115 min.	50 miles 75-105 min.	55 miles 80-105 min.	6 miles 20-30 min.	49 miles 60-80 min.	24 miles 35-40 min.	21 miles 35-45 min.
Reid State Park, Georgetown via Rt. 127	50 miles 70-90 min.	35 miles 75-90 min.	36 miles 60-90 min.	23 miles 35-50 min.	32 miles 45-55 min.	35 miles 60-75 min.	45 miles 70-105 min.	31 miles 50-60 min.	53 miles 75-95 min.	53 miles 75-95 min.	49 miles 60-80 min.	24 miles 35-40 min.	21 miles 35-45 min.
Topsham Fair Mall	31 miles 30-45 min.	20 miles 35-45 min.	34 miles 50-80 min.	2 miles 10-15 min.	10 miles 15 min.	16 miles 35-45 min.	43 miles 60-100 min.	28 miles 40-55 min.	32 miles 40-55 min.	32 miles 40-55 min.	27 miles 30-40 min.	24 miles 35-40 min.	21 miles 35-45 min.
Wiscasset Downtown	25 miles 35-55 min.	31 miles 50-60 min.	13 miles 25-45 min.	19 miles 25-40 min.	29 miles 40-60 min.	32 miles 55-70 min.	23 miles 40-60 min.	27 miles 45-60 min.	50 miles 65-90 min.	50 miles 65-90 min.	45 miles 55-65 min.	23 miles 35-45 min.	21 miles 35-45 min.

FAQ'S

Frequently Asked

The Bath-Brunswick Midcoast region is blessed to have two very busy information centers to greet tourists in addition to the Southern Midcoast Maine Chamber. We decided to ask them what are the most frequently asked questions they receive and here were some answers:

What kind of GPS coverage will I get?

GPS accuracy can vary depending on your provider and location. Midcoast Maine has some hilly terrain and lots of waterways so reception can be spotty out on the peninsulas. Every year it gets better, but paper maps and signs need to be part of your navigation strategy. In the more rural areas, addresses may not be plotted with the accuracy you may be used to in a more populated region.

What kind of mobile phone coverage will I get?

Mobile network connectivity and data speeds can vary depending on your provider and location. With some densely wooded hiking trails and remote water ways we can't have towers everywhere. Every year it gets better, but be prepared to find yourself in areas where you don't have enough signal to use the internet or to make phone calls. Wi-fi hotspots have expanded internet use in the past five years, but it's still a rural area, which is part of the charm, but also not ideal for perfect cellular coverage. Printed guides and paper maps and signs need to be part of your navigation strategy to supplement online materials.

Where can I find lighthouses?

- The lighthouses in the Bath area are all on islands and are best seen from the water. The Maine Maritime Museum in Bath offers seasonal boat tours.
- Lighthouses in the Penobscot Bay area (Camden/Rockland) are Marshall Point, Owl's Head, and Rockland Breakwater. For details and maps see the Jewel of the Coast visitor's guide. From Bath to the Rockland area is a little over 1 hour.
- For Pemaquid Point Lighthouse take the Route 1 exit at Damariscotta. Travel time from Bath to Pemaquid Point Lighthouse is approximately 1.25 hours.

For the best lighthouse reference guides check out the Bath Regional Information Center Midcoast Lighthouse Map or the Maine Midcoast & Islands guide.

Where can I get boating access to the water?

- Mill Street Canoe Portage, Brunswick
- Water Street Boat Landing, Brunswick
- Sawyer Park, Brunswick
- Nequasset Park, Woolwich

Paddling opportunities are abundant in Maine with:

- 3,500+ miles of coastline waters
- 6,000+ lakes and ponds
- Over 31,000 miles of rivers and streams offer meandering flatwater to technical whitewater experiences

d Questions from Tourists

A good reference guide called the Paddling Information Guide is available at the Bath Regional Information Center.

Where can I go biking?

For paved bike trails look for the Androscoggin River Bicycle and Pedestrian Path, Brunswick (trail head is at the end of Water Street and the trail runs alongside Route 1). Also the Whiskeag Trail in Bath is a good bicycling opportunity. Road cycling is common in the region and Topsham includes roads with designated bike travel lanes. Additionally, for mountain biking, the Brunswick Topsham Land Trust, Harpswell Land Trust, and Kennebec Estuary Land Trust properties are each labeled as hiking-only or open for mountain-biking.

Where can I get a great lobster?

Nearly every restaurant in the region features seafood and quite often lobster. When distinguishing where to go, think about what other attributes do you want—a dockside restaurant off the beaten path? A restaurant close to downtown? A view of the river? Table service or counter service? Determining what else you want in your meal will make it easier to decide where to go. But honestly you have an abundance of choices and all are within a handful of miles of the water's edge, so you know it'll be the freshest Maine lobster anywhere. We grew up around it, so no matter where you go, you are likely being served by a local seafood pro.

What can we do today?

There are daily activities in the summer months and at least 5-10 weekly events outside of summer. To help find them yourself, the Chamber can help with the most comprehensive online event calendar list in the region at www.midcoastmaine.com. The chamber also created a print version called the 2021 Midcoast Calendar of Events. This print piece has daily listings of events by date. For instance, if you're only interested in what is happening from August 3 - 9 you can easily find events listed by dates here. **The 2021 Midcoast Calendar** is available for download for free at the chamber website listed above, or you can find it at the information centers and in many lodging properties and restaurants in the region.

What are other Midcoast Maine Map resources?

The Maine's Midcoast & Islands guidebook has a detailed map of the Midcoast (Bath to Belfast) in the back of their guidebook, which includes a lighthouse map. If you're traveling north up Route 1 the Maine's Midcoast guidebook map will be more helpful than a highway map. The map shows points of interest such as lighthouses and other points of interest.

Also, listed in the community profiles section of this guide will be alternate other maps and resources listed for our largest communities.



Where Do You Want to Eat, Play and Stay?

PLAN YOUR TRIP

Sites You Want to See

1. _____
2. _____
3. _____

Where You Want to Stay

1. _____
2. _____
3. _____

Towns You Want to Visit

1. _____
2. _____
3. _____

Where Do You Need to Eat

1. _____
2. _____
3. _____

Three More Things You Don't Want to Miss

1. _____
2. _____
3. _____

Use this page to keep track of the places, events and things you want to explore in

Bath-Brunswick & Midcoast Maine

Are you Going to get...

...a Lobster? _Yes _No

...a Maine Beer? _Yes _No

...a Maine-Made Gift _Yes _No

...a Picture of the Rocky Coast _Yes _No

Are You Going to Drive to...

...Lands End in Harpswell _Yes _No

...Popham Beach in Phippsburg _Yes _No

...Reid State Park in Georgetown _Yes _No

...L.L. Bean _Yes _No

Are You Going to...

...go for a sail _Yes _No

...put your feet in the water _Yes _No

...go see a show or concert _Yes _No

...explore a hiking trail _Yes _No

2021 Community Event Dates

Many community event dates were not available when we went to print for this guide, however, we will have an exhaustive list by the time the guide is printed and distributed on our website at www.midcoastmaine.com

Here are a few event dates we are sure about:

2nd Friday Brunswick Art Walks

Various Locations, Maine Street, Brunswick

Second Friday of the Summer,

4pm to 7pm

June 11, July 9, August 13 & September 10

Music on the Mall

Town Mall Gazebo, Maine Street, Brunswick

Every Wednesday, 6pm (rain date Thurs)

June 30– September 1

Presented by Brunswick

Downtown Association

FMI: www.brunswickdowntown.org

Bath Summer Concert Series (2)

Gazebo Concerts in Library Park

890 Washington Street, Bath

Every Tuesday & Friday, 7pm

June 22 thru August 31

Waterfront Park Concert Series

61 Commercial Street, Bath

Every Saturday, 6pm

July 10 thru August 28

Presented by Main Street Bath &

Chocolate Church Arts Center

FMI: www.visitbath.com

Harpwell Bandstand By the Sea

George Mitchell Field, Harpswell

Every Thursday, 6pm to 7:30pm

June 24 thru August 26

Presented by: Town of Harpswell

FMI: www.harpwell.maine.gov

3rd Annual Midcoast Tree Festival

St. John's Community Center, Brunswick

Nov. 21, 22, 23 & Nov. 26, 27, 28, 10am to 6pm

Presented by: Meals on Wheels, St. John's School

and the Southern Midcoast Maine Chamber

FMI: www.midcoastmaine.com

In business and in life...

It's all about connections...

It's not just who you know, but where you go.

Western Maine Transportation Services can help you get connected...

To work...

To higher-ed...

To shopping...

To healthcare...

To family & friends...

To recreation...

To Amtrak's Downeaster, Concord Coach, Greyhound, & METRO BREEZ...

WMTS provides safe, reliable and affordable transportation on accessible buses.

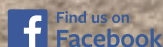
Try the new L~A/Lisbon/Bath **BlueLine** commuter and the **Brunswick Explorer...**

...and keep watching for some exciting news about local bus service!

Visit www.wmtsbus.org or call 800-393-9335, and press 1 for more information.

Western Maine Transportation Services...

We're all about connections!



Western Maine
Transportation Services





**If it needs doing,
KIOTI tractors will get it done!**

KIOTI has a full line of hay-hauling, dirt-digging, trail-blazing machines ready to take on any job that demands a durable compact tractor



**Get your KIOTI tractor today
at Topsham Tractor**



**Topsham Tractor
& Equipment**

403 Lewiston Rd., Topsham
Open: 8-5 Mon - Fri / 8-2 Sat
207-209-2000



In 2020, we faced an unprecedented pandemic that some businesses and chambers of commerce did not make it through.

The Southern Midcoast Maine Chamber is still here because of the unshakeable support of our member businesses.

Beyond dues, we have an annual support program that became critical for us during the pandemic, and the members of that program are listed below.

Thank you to our 2021 Cornerstone Members for your continued support of all we do.

2021 Cornerstone Commercial Real Estate Member



2021 Cornerstone Health Care Member



2021 Cornerstone Automotive Sales Member



2021 Chamber Partners



2021 Chamber Supporter



Thank you for being the foundation of what we do



Being a catalyst for the growth and development of our region through collaborative policymaking, eliminating barriers, connecting leaders, promoting goodness, and welcoming diversity.

midcoastmaine.com

(207) 725-8797

Chamber Member Directory

ADVERTISING & MARKETING

bCreative Advertising & Design

180 Meadow Road Topsham, ME 04086
(207) 319-8068

Binnie Media

30 Thomas Drive Westbrook, ME 04092
(207) 797-0780 www.binnimedia.com

CD&M Communications

48 Free Street, Portland ME 04101
(207) 774-7528 www.cdmc.com

Dogs At Work

41 Water Street Brunswick, ME 04011
(207) 373-1159 www.dogsatwork.com

Welcome Wagon

PO Box 6458 Portland, ME 04102
(207) 513-7545 www.welcomewagon.com

AERIAL PHOTOGRAPHY

Androken Aerial

(207) 841-2155 www.androcknaerial.com

AIR & SURFACE PURIFICATION

Aerus- The Pure Experts

119 Bath Road, Suite 1 Brunswick ME 04011
(207) 729-3811 www.thepureexperts.com

ANIMAL CARE

Androscoggin Animal Hospital

457 Foreside Road Topsham ME 04086
(207) 729-4678
www.androscogginanimalhospital.com

Maine Veterinary Medical Center

1500 Technology Way Scarborough, ME 04074
(207) 885-1290
www.maineveterinarymedicalcenter.com

Midcoast Humane Society

30 Range Road Brunswick, ME 04011
(207) 725-5051 www.coastalhumanesociety.org

The Pet Concierge

18 Birkdale Road Falmouth ME 04105
(207) 837-5263
www.facebook.com/midcoastpetconcierge

APPRAISALS

Baribeau Agency, Inc.

51 Pleasant Street Brunswick ME 04011
(207) 729-3333

ARCHITECTURE

David Matero Architecture

49 Centre Street Bath ME 04530
(207) 389-4278 www.davidmatero.com

ARTS & THEATERS

Bowdoin International Music Festival

181 Park Road Brunswick ME 04011
(207) 373-1400 www.bowdoinfestival.org

Maine State Music Theatre

Pickard Theatre Brunswick ME 04011
(207) 725-8769 www.msmt.org

Midcoast Symphony Orchestra

Home Stage: Orion Performing Arts Center
Topsham ME 04086
(207) 371-2028 www.midcoastsymphony.org

Musique Du Jour -

The Kennebec Early Music Festival
20 Webber Avenue Bath ME 04530
(207) 284-8855 www.kennebecearlymusicfestival.org

Orion Performing Arts Center

66 Republic Ave. Topsham, ME 04086
(207) 729-2950 www.orionperformingartscenter.org

Sparloft Arts

PO Box 161 Georgetown ME 04548
(207) 371-2404 www.alisonleefreeman.com

The Theater Project

14 School Street Brunswick, ME 04011
(207) 729-8584 www.theaterproject.com

ASSISTED & INDEPENDENT LIVING FACILITIES

Avita of Brunswick

89 Admiral Fitch Avenue Brunswick, ME 04011
(207) 729-6222
northbridgecos.com/avita-brunswick-assisted-living-memory-care/

Elm Street

56 Elm Street Topsham, ME 04086
(207) 725-1134 www.elmstassistedliving.com

Sunnybrook

340 Bath Road Brunswick, ME 04011
(207) 443-9100 www.northbridgecos.com/sunnybrook

The Vicarage by the Sea, Inc.

9 Vicarage Lane Harpswell, ME 04079
(207) 833-5480 www.thevicaragebythesea.com/

ATTORNEYS, LEGAL SERVICES

Avery & Lawson-Stopps, Attorneys at Law

7 Park Street, Suite 201 Bath, ME 04530
(207) 442-8781 www.sals-law.com

Eaton Peabody

167 Park Row Brunswick ME 04011
(207) 729-1144 www.eatonpeabody.com

Hopkinson & Abbondanza, PA

6 City Center Portland, ME 04101
(207) 772-5845 www.hablaw.com

Law Office of Bradford A. Pattershall, LLC

18 Pleasant St. Brunswick, ME 04011
(207) 373-9309 www.law207.com

Law Offices of Arthur J. Lamothe

114 Maine Street, Suite 2 Brunswick, ME 04011
(207) 721-9911 www.lamothelaw.com

LegalShield and IDShield

310 Rogers Road (By appt only) Yarmouth, ME 04096
(207) 807-8924 www.connieayotte.com

Moncure & Barnicle

9 Bowdoin Mill Island Topsham, ME 04086
(207) 729-0856 www.mb-law.com

Preti Flaherty

1 City Center Portland, ME 04101
(207) 791-3000 www.preti.com

Skelton, Taintor & Abbott

95 Main St. Auburn, ME 04210
(207) 784-3200 sta-law.com

AUTOMOTIVE SALES & SERVICE

Atlantic Motorcar Services, Inc.

U.S. Rte. 1 / 10 Oxhorn Road Wiscasset, ME 04578
(207) 882-9969 www.atlanticmotorcar.com

Bodwell Chrysler Jeep Dodge

169 Pleasant Street Brunswick, ME 04011
(207) 729-3375 www.bodwellchryslerjeepdodge.com

D.R. Coffin's Garage

150 State Road West Bath, ME 04530
(207) 443-6411 www.drcoffins.com

Darling's Brunswick Ford

262 Bath Road Brunswick, ME 04011
(207) 725-1228 www.darlings.com

Fast Eddie's Express Car Wash

139 Pleasant Street Brunswick, ME 04011
(207) 612-9602 www.fasteddieexpresscarwash.com

Goodwin's Chevrolet - Mazda

195 Pleasant Street Brunswick, ME 04011
1-888-236-7785 www.goodwinchevy.com

Goodwin's Volvo

91 Main Street Topsham, ME 04086
(207) 729-3369 www.goodwinsvolvo.com

AVIATION & AVIATION SCHOOL

Maine Coastal Flight

15 Terminal Rd, Brunswick Executive Airport,
Brunswick ME, 04011
(207) 406-2080 www.maineecoastalfight.com

New England Aviation Academy

112 Orion Street Brunswick, ME 04011
(866) 632-6628 / (207) 557-2224
Neaviationacademy.com

BEVERAGE DISTRIBUTOR

Central Distributors

15 Foss Road Lewiston, ME 04241
(207) 784-4026 www.centraldistributors.com

BOATING & BOATYARDS

Finestkind Boatyard

11 Bristol Way Harpswell, ME 04079
(207) 833-6885 www.fkby.com

Sea Escape Charters

23 Sea Escape Lane Bailey Island, ME 04003(207)
841-9125 www.schooneralert.com

BOATING TOURS

Cap'n Fish's Whale Watch

42 Commercial Street Boothbay Harbor, ME04528
800-636-3244 www.mainewhales.com

CATERING

Simply Susie's Catering

108 Shore Acres Road Harpswell, ME 04079
(207) 833-5317

CERTIFIED PUBLIC ACCOUNTANTS

Albin, Randall and Bennett, CPAs

130 Middle Street Portland, ME 04112
(207) 772-1981 www.arbcpa.com

BerryDunn

2211 Congress Street Portland, ME 04102
(800) 565-6565 www.berrydunn.com

Boucher Perkins Campbell Paradis CPAs

163 Park Row, Brunswick, ME 04011
(207) 725-4327

H & R Pye's Tax and Accounting Service

46 Varney Mill Road Bath, ME, 04530
(207) 443-6183 www.pyestax.com

Management Accounting In New England, Inc.

18 Middle Street #1 Brunswick, ME 04011
(207) 729-0041 www.mainebeancounters.com

McLeod|Ascanio

124 Maine Street Brunswick, ME 04011
(207) 729-6533 www.mcleodascanio.com

Office of Cornelia C. Viek, CPA

5 Bank Street Brunswick, ME 04011
(207) 725-8982 www.viekcpa.com

One River CPAs

259 Front Street Bath, ME 04530
(207) 371-8002 www.onerivercpas.com

Richard A. Chabot, CPA PC

795 Middle Street Bath, ME 04530
(207) 443-8680 www.anchoratax.com

Tracy Cassidy, CPA SC

1 Nugget Lane Brunswick, ME 04011
207-522-1014 www.tracycassidy.com

William Brewer, CPA

858 Washington Street Bath, ME 04530
(207) 443-9759

CHILDCARE CENTER

Building Blocks Child Care

24 Park Drive Topsham, ME 04086
(207) 725-8544

CITIZEN MEMBERS

Friend of the Chamber - Sande Updegrah

Chamber Member Directory

CIVIC ORGANIZATIONS

Knights of Columbus

39 Pleasant Street Brunswick, ME 04011
(207) 729-6552 www.koc1947.org

CLEANUP & RESTORATION

Servpro of Bath-Brunswick

28 Monument Place Topsham, ME 04086
(207) 798-2746 www.servprobb.com

COMMUNICATIONS & CONNECTIVITY

Comcast Business

181 Ballardvale St. STE 203 Wilimington, MA 01887
(978) 825-2386 www.business.comcast.com

Consolidated Communications

1 Davis Farm Rd Portland, ME 04101
1-866-984-2001 www.fairpoint.com

US Cellular

11 Winners Circle Topsham, ME 04086
(207) 292-2383 www.uscellular.com

COMMUNITY DEVELOPMENT ORGANIZATIONS

Brunswick Downtown Association

124 Maine Street Brunswick, ME 04011
(207) 729-4439 www.brunswickdowntown.org

Greater Freeport Chamber of Commerce

5 Depot Street Freeport, ME 04032
(207) 847-5240 www.freeportmainechamber.com

Harpswell Business Association

PO Box 125 Harpswell ME, 04079
(207) 833-2437 www.harpswellmaine.org

Main Street Bath Inc.

15 Commercial Street Bath, ME 04530
(207) 442-7291 www.visitbath.com

Maine State Chamber of Commerce

125 Community Dr., Suite 101 Augusta, ME 04330
(207) 623-4568 www.mainechamber.org

Wiscasset Chamber of Commerce

297 Bath Road Wiscasset ME, 04578
(207) 882-9600 www.wiscassetchamber.com

CONSTRUCTION

Crooker Constuction LLC

103 Lewiston Road Topsham, ME 04086
(207) 729-3331 www.crooker.com

Frohmler Construction, Inc.

123 State Road West Bath, ME 04530
(207) 443-6749 www.frohmlerconstruction.com

Reed and Reed, Inc.

275 River Rd/PO Box 370 Woolwich, ME 04579
(207) 443-9747 www.reed-reed.com

CONSULTING

SimplySized Home - Downsizing

72 Balsam Road Yarmouth, ME 04096
(207) 358-0046 www.simplysizedhome.com

CONSULTING- LEADERSHIP COACH AND ORGANIZATION ADVISOR

Price Associates

PO Box 173 Phippsburg, ME 04562
(703) 400-0363 www.price-associates.com

CONTRACTORS & BUILDERS

Horch Roofing

2414 Camden Road Warren, ME 04864
(207) 273-1111 www.horchroofing.com

Lajoie Brothers

2 Admiral Fitch Drive Brunswick, ME 04011
(207) 622-1764 www.lajoiebrothers.com

Landicity Builders

56 Little Bird Lane Harpswell, ME 04079
(207) 956-0699 www.landicity.com

Long Cove Builders, Inc

1573 Route 24 Orr's Island, ME 04066
(207) 833-5875 www.longcovebuilders.com

Shelter Institute

873 US Route 1 Woolwich, ME 04579
(207) 442-7938 www.shelterinstitute.com

CRAFTSMAN

Accolades Awards & Trophies (Basement Woodwork, Inc.)

52 Farley Rd Brunswick, ME 04011
(207) 725-8980 www.basementwoodworks.com

Forwood Thinking

50 Leighton Road Durham, ME 04222
(207) 449-2012 www.facebook.com/Forwoodthinking

ECONOMIC DEVLEOPMENT

Midcoast Regional Redevelopment Authority

15 Terminal Rd. Brunswick, ME 04011
(207) 798-6512 www.mrra.us

U. S. Small Business Adminstration - SCORE

100 Middle St., East Tower 2nd Flr Portland, ME 04101
(207)-772-1147 www.portlandme.score.org

EDUCATION

Bowdoin College

3900 College Station Brunswick, ME 04011
(207) 725-3000 www.bowdoin.edu

Brunswick High School

116 Maquoit Road Brunswick, ME 04011
(207) 319-1910 www.brunswick.k12.me.us

Harpswell Coastal Academy

9 Ash Point Road Harpswell, ME 04079
(207) 833-3229 www.harpswellcoastalacademy.org

Maine Region Ten Technical High School

68 Church Road Brunswick, ME 04011
(207) 729-6622 www.r10tech.org

Maine School Administrative District #75

50 Republic Avenue Topsham, ME 04086
(207) 729-9961 www.link75.org

Merrymeeting Adult Education

35 Republic Ave. Topsham, ME 04086
(207) 729-7323 www.merrymeeting.maineadulted.org

Midcoast Senior College

29 Burbank Ave., Suite 6 Brunswick, ME 04011
(207) 725-4900 www.midcoastseniorcollege.org

Southern Maine Community College

29 Sewall St. Brunswick, ME 04011
(207) 844-2102 www.smccme.edu

St. John's Catholic School

37 Pleasant Street Brunswick, ME 04011
(207) 725-5507
www.saint-johns-brunswick.pvt.k12.me.us

University of Maine at Augusta- Brunswick Center

12 Sewall St. Brunswick, ME 04011
(207) 442-7736 www.uma.edu/brunswick

EDUCATION- OUTDOORS**Cathance River Education Alliance (CREA)**

Evergreen Circle, Topsham ME 04086
(207) 331-3202 www.creamaine.org

ELECTRICIANS**DA Cressey Heat Pumps & Electric**

31 Nestlenook Lane Phippsburg, ME 04562
(207) 295-6344 www.dacressey.com

Favreau Electric

37 Jordan Avenue Brunswick, ME 04011
(207) 725-2005 www.favreau-electric.com

Scott Burns Electric

25 Jesse Road Topsham, ME 04086
(207) 798-4676 www.scottburnselectric.com

EMPLOYMENT SERVICES**Bonney Staffing Center, Inc.**

12 Shuman Ave Unit 9A Augusta, ME 04330
(207) 621-1100 www.bonneystaffing.com

Coastal Counties Workforce, Inc.

14 Maine Street, Suite 203A Brunswick, ME 04011
(207) 725-5472 www.coastalcounties.org

Southern Midcoast Career Center

29 Sewall St. Brunswick, ME 04011
1-888-836-3355 www.mainecareercenter.gov

ENERGY**Actual Energy, Inc.**

74 Route 6A Sandwich, MA 02563
(844) 822-8825 www.actualenergy.com

Central Maine Power Co.

280 Bath Road Brunswick, ME 04011
(800) 565-3181 www.cmpco.com

Dead River Company

2 Industrial Parkway Brunswick, ME 04011
(207) 729-6688 www.deadriver.com

M.W. Sewall

259 Front Street Bath, ME 04530
(207) 442-7994 www.mwsewall.com

ENERGY- GREEN**Maine Green Power**

PO Box 6806 Portland, ME 04101
(207) 613-0697 www.megreenpower.com

ENERGY-EDUCATION**Maine Energy Marketers Association**

25 Greenwood Rd. Brunswick, ME 04011
(207) 729-5298 www.maineenergymarketers.com

ENGINEERING & SURVEYING**Hoyle, Tanner & Associates, Inc.**

106 Lafayette St. Unit 2D Yarmouth, ME 04096
(207) 852-0973 www.hoyletanner.com

Northern Survey Engineering

22 Parker's Way Brunswick, ME 04011
(207) 440-3487 www.northernsurveyengineering.com

Sitelines, PA

119 Purington Rd, Suite A Brunswick, ME 04011
(207) 725-1200 www.sitelinespa.com

FARMING & FARM GOODS**Brooks Feed and Farm**

86 Union Street Brunswick, ME 04011
(207) 729-6501 www.brooksfeed.com

Brunswick Farmers Market

Maine Street Brunswick, ME 04011
(207) 666-8135 www.brunswickfarmersmarket.com

FINANCIAL/BANKS**Androscoggin Bank- Cook's Corner**

242 Bath Road Suite 1 Brunswick, ME 04011
(207) 729-5128 www.androscogginbank.com

Androscoggin Bank- Maine Street

208 1/2 Maine St. Brunswick, ME 04011
(207) 729-1661 www.androscogginbank.com

Bangor Savings Bank

45 Maine Street Brunswick, ME 04011
(207) 420-3966 www.bangor.com

Bar Harbor Bank & Trust

2 Main Street Topsham, ME 04086
(207) 729-1426 www.bhbt.com

Bath Savings Institution- Bath

105 Front Street Bath, ME 04530
(207) 442-7711 www.bathsavings.com

Bath Savings Institution- Brunswick

3 Pleasant Street Brunswick, ME 04011
(207) 729-8039 www.bathsavings.com

Camden National Bank- Bath

7 Chandler Drive Bath, ME 04530
(207) 443-3364 www.camdennational.com

Chamber Member Directory

Camden National Bank- Cook's Corner

6 Gurnet Road Brunswick, ME 04011
(207) 725-9270 www.camdennational.com

Camden National Bank- Maine Street

137 Maine Street Brunswick, ME 04011
(207) 798-5572 www.camdennational.com

Camden National Bank- Richmond

111 Main Street Richmond, ME 04357
(207) 737-4329 www.camdennational.com

Camden National Bank- Topsham

16 Topsham Fair Mall Road Topsham, ME 04086
(207) 798-5545 www.camdennational.com

First Federal Savings

Front Street Bath, ME 04530
(207) 442-8711 www.firstfederalbath.com

Key Bank

172 Maine Street Brunswick, ME 04011
(207) 729-2600 www.key.com

Machias Savings Bank

193 Middle Street Portland, ME 04101
(207) 561-3948 www.machiassavings.bank

Mechanics Savings

16 Station Ave., Suite 103 Brunswick, ME 04011
(207) 786-5701 www.mechanicssavings.com

Northeast Bank

86 Maine Street Brunswick, ME 04011
(207) 729-8711 www.northeastbank.com

Norway Savings Bank- Cooks Corner

14 Gurnet Rd. Brunswick, ME 04011
(207) 725-4303 x5610 www.norwaysavings.bank

Norway Savings Bank- Maine St

83 Maine Street Brunswick, ME 04011
(207) 725-5591 www.norwaysavings.bank

Norway Savings Bank- Topsham

47 Topsham Fair Mall Road Topsham, ME 04086
(207) 725-5950 www.norwaysavings.bank

People's United Bank - Brunswick

112 Maine Street Brunswick, ME 04011
(207) 729-3355 www.peoples.com

TD Bank- Cooks Corner

10 Tibbetts Drive Suite 100 Brunswick, ME 04011
(207) 721-8122 www.tdbank.com

TD Bank- Maine Street

35 Elm Street Brunswick, ME 04011
(207) 729-7378 www.tdbank.com

FINANCIAL/CREDIT UNIONS

Atlantic Federal Credit Union- Brunswick

55 Cushing Street Brunswick, ME 04011
(207) 725-8728 www.atlanticfcu.com

Atlantic Federal Credit Union- Topsham

3 Union Park Road Topsham, ME 04086
800-834-0432 www.atlanticfcu.com

Down East Credit Union- Topsham

94 Main Street Topsham, ME 04086
(207) 373-1674 www.downeastcu.com

Five County Credit Union

171 Bath Rd. Brunswick, ME 04011
1-800-750-0959 www.fivecounty.com

Midcoast Federal Credit Union- Bath

831 Middle Street Bath, ME 04530
(207) 443-1821 www.midcoastfcu.me

Midcoast Federal Credit Union- Brunswick

6 Station Avenue Brunswick, ME 04011
(207) 729-8737 www.midcoastfcu.me

Midcoast Federal Credit Union- Freeport

186 Lower Main Street Freeport, ME 04032
(207) 865-4443 www.midcoastfcu.me

FINANCIAL/SERVICES

Anchor Bookkeeping & Payroll

795 Middle Street Bath, ME 04530
(207) 443-8680 www.anchorfax.com

Edgewater Finacial

57 Main Street Lisbon Falls, ME 04252
(207) 407-4453 www.barnardfinancialplanning.com

Edward Jones Investments- April Caron

32 Pleasant Street Brunswick, ME 04011
(207) 729-1133 www.edwardjones.com

Edward Jones Investments-Chris Wadsworth

149 Maine St. Brunswick, ME 04011
(207) 721-9109 www.edwardjones.com

Edward Jones Investments- Jeff Labbe

1 Front Street Bath, ME 04530
(207) 442-9977 www.edwardjones.com

Edward Jones Investments- Kelsie West

1 Bowdoin Mill Island, Suite 204 Topsham, ME 04086
(207) 729-0578 www.edwardjones.com

Edward Jones Investments- Linda Piper

32 Pleasant Street Brunswick, ME 04011
(207) 729-1133 www.edwardjones.com

Edward Jones Investments- Tom Carr

149 Maine St. Brunswick, ME 04011
(207) 721-9109 www.edwardjones.com

First Command Financial Planning

14 Maine Street, Box 23, Brunswick, ME 04011
(207) 729-4410 www.firstcommand.com

JMH Associates, LLC

74 Orion St Brunswick, ME 04011
(207) 557-2224 jmhassociates.biz

Legacy Investments and Wealth Management

2 Front Street Bath, ME 04530
(207) 443-3222 www.legacyinvestmentsllc.com

Nationwide Payments

(207) 510-6677 nationwidepayments.biz

PayChex

126 Merrow Road Auburn, ME 04210
(207) 795-1104 www.paychex.com

Primerica Financial Services

241 US Rt 1 North, Suite 101 Damariscotta, ME 04543
(207) 563-1999 www.primerica.com/libbyfarmer

Ship Shape Financial -

Robert E Frank, ChFC, CLU, LUTCF
14 Maine St., Suite 213A Brunswick, ME 04011
(207) 607-1781 www.shipshapefinancial.com

Ship Shape Financial - Walter Reynolds

14 Maine St. Suite 213A Brunswick, ME 04011
(207) 837-0718 www.shipshapefinancial.com

FITNESS/TRAINING**Coastal Performance Center**

14 Thomas Point Road Brunswick, ME 04011
(207) 442-9393 www.coastalperformance.org/

Maine Pines Racquet and Fitness

120 Harpswell Road Brunswick, ME 04011
(207) 729-8433 www.maineprines.com

Soaring Seniors Unlimited

38 McLellan Street Brunswick, ME 04011
(207) 837-8865 www.soaring seniors.com

Wilcox Wellness & Fitness

275 Bath Rd Suite 3 Brunswick, ME 04011
(207) 751-5394 www.wilcoxwellnessfitness.com

FLORIST**Flowers Etc.**

15 Jordan Avenue Brunswick, ME 04011
(207) 725-2461 www.flowersetcme.net

FOOD & DRINK**Amato's Sandwich Shops, Inc. - Bath**

111 Centre Street Bath, ME04530
(207) 442-9600 www.amatos.com

Amato's Sandwich Shops, Inc. - Brunswick

148 Pleasant Street Brunswick, ME 04011
(207) 729-5514 www.amatos.com

Bangkok Garden Restaurant

14 Maine Street, Box 12 Brunswick, ME 04011
(207) 725-9708 www.bangkokgardenrestaurant.com

Bath Brewing Company

141 Front Street Bath, ME 04530
(207) 560-3389 www.bathbrewing.com

Blueberries

4 Bowdoin Mill Island Topsham, ME 04086
(207) 725-5100 www.blueberriesfood.com

Bombay Mahal

99 Maine Street Brunswick, ME 04011
(207) 729-5260 www.bombaymahal.com

Buffalo Wild Wings

105 Topsham Fair Mall Road Topsham, ME 04086
(207) 844-5800 www.buffalowildwings.com

Byrnes Irish Pub -Bath

38 Centre Street Bath, ME 04530
(207) 443-6776 www.byrnesirishpub.com

Byrnes Irish Pub -Brunswick

16 Station Ave Brunswick, ME 04011
(207) 729-9400 www.byrnesirishpub.com

Cook's Lobster & Ale House

68 Garrison Cove Road Bailey Island, ME 04003
(207) 833-2818 www.cookslobster.com

Dolphin Marina & Restaurant

515 Basin Point Harpswell, ME 04079
(207) 833-6000
www.dolphinmarinaandrestaurant.com

Dunkin Donuts

104 Pleasant Street, Suite #1 Brunswick, ME04011
(207) 725-0066 www.dunkindonuts.com

Flight Deck Brewing

11 Atlantic Avenue Brunswick, ME 04011
(207) 504-5133 www.flightdeckbrewing.com

Frontier Cafe, Cinema and Gallery

14 Maine Street, Box 10 Brunswick, ME 04011
(207) 725-5222 www.explorefrontier.com

Linda Bean's Maine Kitchen and Topside Tavern

88 Main Street Freeport, ME 04032
(207) 865-9835 www.lindabeansperfectmaine.com

Moderation Brewing

103 Maine Street Brunswick, ME04011
(207) 406-2112 www.moderationbrewing.com

Pat's Pizza of Brunswick

112 Pleasant Street Brunswick, ME 04011
(207) 844-8163 www.patsbrunswick.com

Pepper's Landing

147 Bath Road Brunswick, ME 04011
(207) 844-8847 www.pepperslanding.com

Richard's Restaurant

115 Maine Street Brunswick, ME 04011
(207) 729-9673
www.richardsgermanamericancuisine.com

Sea Dog Brewing Co.

1 Bowdoin Mill Island Topsham, ME04086
(207) 725-0162 www.seadogbrewing.com

The Cabin

552 Washington Street Bath, ME 04530
(207) 443-6224 cabinpizza.com

The Dairy Frost, LLC

107 Bath Road Brunswick, ME 04011
(207) 729-6720
www.facebook.com/Dairy-Frost-LLC-102218526487975/

The Taste of Maine Restaurant

161 Main Street Woolwich, ME 04579
(207) 443-4554 tasteofmaine.com

Urban Element Farm Fresh Eatery & Pub

235 Lewiston Road Topsham, ME 04086
(207) 406-4891 www.urbanelement207.com

Chamber Member Directory

Wild Oats Bakery and Cafe

166 Admiral Fitch Avenue Brunswick, ME 04011
(207) 725-6287 www.wldoatsbakery.com

FUNERAL SERVICES

Brckett Funeral Home

29 Federal Street Brunswick, ME 04011
(207) 725-5511 www.brackettfh.com

Desmond Funeral Services

638 High Street Bath, ME 04530
(207) 725-4381 www.desmondfuneralhomes.com

Funeral Alternatives

46 Bath Road Brunswick, ME 04011
(207) 406-4028 www.funeralalternatives.net

Kincer Funeral Home, Inc.

130 Pleasant Street Richmond, ME 04357
(207) 737-4395 www.kincerfuneralhome.com

GALLERY

Bayview Gallery

58 Maine Street Brunswick ME 04011
(207) 729-5500 www.bayviewgallery.com

GLASS & WINDOWS

Portland Glass Company

261 Bath Road Brunswick, ME 04011
(207) 729-9971 www.portlandglass.com/brunswick-me

GOLF COURSES

Brunswick Golf Club

165 River Road Brunswick, ME 04011
(207) 725-8224 www.brunswickgolfclub.com

HEALTHCARE SYSTEM

Mid Coast-Parkview Health

123 Medical Center Dr Brunswick, ME 04011
(207) 373-6000 www.midcoasthealth.com

HEALTHCARE- CANNABIS

Wellness Connection of Maine

67 Centre Street Bath, ME 04530
1-855-848-6740 www.mainewellness.org

HEALTHCARE- CENTERS

Central Maine Medical Center

300 Main Street Lewiston, ME 04240
(207) 795-0111 www.cmmc.org

HEALTHCARE- DENTAL

Access Endodontics

275 Bath Rd, Suite 6 Brunswick, ME 04011
(207) 203-3060 www.accessendo.me

HEALTHCARE- EYECARE

Maine Optometry

82 Maine Street Brunswick, ME 04011
(207) 729-8474 www.maineoptometry.com

HEALTHCARE- HEARING

Belton New England

275 Bath Road Brunswick, ME 04011
(207) 615-0336 www.beltonene.com

HEALTHCARE- IN-HOME SERVICES

Comfort Keepers

661 Main St, Suite #2 Damariscotta, ME 04543
(207) 563-2273 BestCareME.com

HEALTHCARE- MENTAL HEALTH

Sweetser

329 Bath Road Brunswick, ME 04011
1-800-434-3000 www.sweetser.org

HEALTHCARE- MENTAL HEALTH SERVICES

Clinical Counseling of Maine LLC

30 Island View Lane Brunswick, ME 04011
(207) 786-3556

HEALTHCARE- OCCUPATIONAL

Occupational Health Associates of Maine

270 State Road West Bath, ME 04530
(207) 462-8625 www.ohmaine.com

HEALTHCARE- ORTHOPEDIC

Coastal Orthopedic

14 Thomas Point Road Brunswick, ME 04011 (207)
442- 0325 www.coastalortho.com

HEALTHCARE- PHYSICAL THERAPY

Greater Brunswick Physical Therapy

11 Bowdoin Mill Island, Suite 220 Topsham, ME 04086
(207) 729-1164 www.greaterbrunswickpt.com

Jade Integrated Health

12 Windorf Circle Brunswick, ME 04011
(207) 844-8280 www.jadeintegratedhealth.com

Reform Physical Therapy

439 Lewiston Road Topsham, ME 04086
(207) 725-4400 www.reform-pt.com

HEALTHCARE- SENIOR CARE

Plant Memorial Home

1 Washington Street Bath, ME 04530
(207) 443-8986 www.planthome.org

HEALTHCARE- URGENT CARE

ConvenientMD

193 Bath Road Brunswick, ME 04011
(207) 424-2272 www.convenientmd.com

HISTORICAL PRESERVATION

Sagadahoc Preservation Inc.

880 Washington Street Bath, ME 04530
(207) 443-2174 www.sagadahocpreservation.org

HISTORICAL SOCIETIES

Lincoln County Historical Association

133 Federal Street Wiscasset, ME 04578
(207) 882-6817 www.lincolncountyhistory.org

Maine's First Ship

122 Front Street Bath, ME 04530
(207) 443-4242 www.mfship.org

INSURANCE

Atlantic Federal Credit Union Insurance LLC

55 Cushing Street Brunswick, ME 04011
(207) 373-0342 atlanticfcuinsurance.com

Bilodeau Insurance Agency

92 Pleasant Street Brunswick, ME 04011
(207) 721-8347 www.bilodeauinsurance.com

Combined Management Inc

520 Main Street Lewiston, ME 04240
(207) 782-8246 www.combinedmanagement.com

Cross Insurance

5 Chandler Dr. Bath, ME 04530
(207) 443-3336 www.crossagency.com

Downeast Insurance

94 Main Street Topsham, ME 04086
(207) 373-1683 www.downeastinsurance.com

J. Edward Knight and Company

15 Vine Street Bath, ME 04530
(207) 443-2700
www.jedwardknight.com/insurance-maine

Liberty Mutual Insurance

45 Memorial Circle Ste 100 Augusta, ME 04330
(207) 782-7013 www.libertymutual.com

Midcoast Insurance Agency, LLC

134 Front Street Bath, ME 04530
(207) 443-8400 www.midcoastinsurance.com

Riley Insurance Agency LLC

139 Maine Street Brunswick, ME 04011
(207) 729-3321 www.rileyinsurance.com

Rogers Insurance Insurance

38 Main Street Lisbon Falls, ME 04252
(207) 353-6834 www.maineinsuranceonline.com/

State Farm Insurance - Chris Grimes

20 Bath Road Brunswick, ME 04011
(207) 725-8442 www.insurance-maine.com

The Allumbaugh Agency

The Ballard Center, 6 East Chestnut St.,
Suite 520 Augusta, ME 04330
(207)-623-1110 www.allumbaugh.com

Wayne Ladner Insurance

9 Shelter Drive Richmond, ME 04357
(207) 737-4995 www.wayneladnerins.com

JEWELRY

Cross Jewelers

570 Congress St. Portland, ME 04101
(207) 773-3107 www.crossjewelers.com

Day's Jewelers

49 Topsham Fair Mall Rd. Topsham, ME 04086
(207) 725-8559 www.daysjewelers.com

Keith Field Goldsmith

147 Maine Street Brunswick, ME 04011
(207) 725-5141 www.keithfieldgoldsmith.com

LANDSCAPE PROFESSIONALS

SKILLINS GREENHOUSES

422 Bath Road Brunswick, ME 04011
(207) 442-8111 www.skillins.com

Vail's Tree Service, Inc.

1673 Harpswell Islands Road, Orr's Island, ME 04066
(207) 833-2949

LIBRARIES

Curtis Memorial Library

23 Pleasant Street Brunswick, ME 04011
(207) 725-5242 www.curtislibrary.com

Patten Free Library

33 Summer Street Bath, ME 04530
(207) 443-5141 www.patten.lib.me.us

Topsham Public Library

25 Foreside Road Topsham, ME 04086
(207) 725-1727 <https://topshamlibrary.org/>

LOCKSMITHS

B & B Locksmiths

15 Patricia Drive Topsham, ME 04086
(207) 729-1389

LODGING

Bailey Island Motel

1951 Harpswell Islands Rd. Rt. 24
Bailey Island, ME 04003
(207) 833-2886 www.baileyislandmotel.com

Bath Area B&B Association

926 Cundy's Harbor Road Harpswell, ME 04079
(207) 725-0979 www.midcoastmaineinns.com

Best Western Plus Brunswick/Bath

71 Gurnet Road Brunswick, ME 04011
(207) 725-5251 www.brunswickmainehotel.com

Black Lantern Bed and Breakfast

57 Elm Street Topsham, ME 04086
(207) 725-4165 www.blacklanternbandb.com

Cook's Island View Motel, LLC

2041 Harpswell Islands Road Bailey Island, ME 04003
(207) 833-7780 www.cooksislandmotel.com

Day's Inn By Wyndham- Bath Brunswick Area

224 Bath Road Cook's Corner Brunswick, ME 04011
(207) 725-8883 www.wyndhamhotels.com/days-inn

Fairfield Inn and Suites by Marriott

36 Old Portland Road Brunswick, ME 04011
(207) 721-0300 www.marriott.com/hotels

Chamber Member Directory

Hampton Inn Bath/Brunswick

140 Commercial Street Bath, ME 04530
(207) 386-1310 www.hamptoninn.com

Harbour Towne Inn on The Waterfront

71 Townsend Ave. Boothbay Harbor, ME 04538
(207) 633-4300 www.harbourtowneinne.com

Head Beach Campground and Cottages

612 Small Point Rd. Phippsburg, ME 04562
(207) 389-1666 www.headbeach.com

Inn at Bath

969 Washington Street Bath, ME 04530
(207) 443-4294 www.innatbath.com

Kennebec Inn Bed and Breakfast

696 High Street Bath ME, 04530
(207) 443-5324 www.kennebecinn.com

Log Cabin: An Island Inn

5 Log Cabin Road Bailey Island, ME 04003
(207) 833-5546 www.logcabin-maine.com

Moonlight Inn

215 Pleasant Street Brunswick, ME 04011
(207) 729-9991 www.moonlightinnme.com

Relax Inn

133 Pleasant Street Brunswick, ME 04011
(207) 725-8761 www.relaxinnme.com

Residence Inn Bath/Brunswick

139 Richardson St. Bath, ME 04530
(207) 443-9741 www.marriott.com/pwmba

Sagadahoc Bay Campground

9 Molly Point Lane Georgetown, ME 04548
(207) 371-2014 www.sagbaycamping.com

Sea Escape Cottages

23 Sea Escape Lane Bailey Island, ME 04003
(207) 833-5531 www.seaescapecottages.com

Sebasco Harbor Resort

29 Kenyon Road Sebasco Estates, ME 04565
1-877-927-8152 www.sebasco.com

The Brunswick Hotel and Tavern

4 Noble Street Brunswick, ME 04011
(207) 837-6565 www.thebrunswickhotelandtavern.com

The Mooring B and B

132 Seguinland Road Georgetown, ME 04548
(207) 371-2790 / (866)-828-7343 themooringb-b.com

Travelers Inn

130 Pleasant Street Brunswick, ME 04011
(207) 729-3364 www.travelersinnme.com

LODGING- VACATION RENTALS

MaineStay Vacations

1624 Harpswell Islands Rd. Orr's Island, ME 04066
(207) 833-8337 www.mainestayvacations.com

Your Island Connection, LLC

7 Aaron's Way Bailey Island, ME 04003
(207) 833-7779 www.mainerentals.com

MANUFACTURING

General Dynamics Bath Iron Works

700 Washington Street Bath, ME 04530
(207) 443-3311 www.gdbiw.com

Kennebec Company

37 Wing Farm Parkway Bath, ME 04530
(207) 443-2131 www.kennebeccompany.com

STARC Systems

112 Orion Street Brunswick, ME 04011
(844) 596-1784 www.starcsystems.com

Woodex Bearing Company/MECO Seal

216 Bay Point Road Georgetown, ME 04548
(207) 371-2210 www.mecoseal.com

MULTI-BUSINESS FACILITY

Merrymeeting Plaza W/S Brunswick Properties

147 Bath Road Brunswick, ME 04011
1-800-709-5940 www.merrymeetingplaza.com

Tontine Maine, LLC

PO Box 66749 Falmouth, ME 04105
(207) 347-4455

Topsham Fair Mall

49 Topsham Fair Mall Road Topsham, ME 04086
(207) 729-9000

MUNICIPAL

City of Bath

55 Front Street Bath, ME 04530
(207) 443-8330 www.cityofbath.com

County of Cumberland

142 Federal Street, Suite 100 Portland, ME 04101
(207) 871-8380 www.cumberlandcounty.org

Town of Arrowsic

340 Arrowsic Road Arrowsic, ME 04530
(207) 443- 4609 www.arrowsic.org

Town of Bowdoin

23 Cornish Drive Bowdoin, ME 04287
(207) 353-6949 www.bowdoinme.com

Town of Bowdoinham

13 School Street Bowdoinham, ME 04008
(207) 666-5531 www.bowdoinham.com

Town of Brunswick

85 Union Street Brunswick, ME 04011
(207) 725-6658 www.brunswickme.org

Town of Dresden

534 Gardiner Rd Dresden, ME 04342
(207) 737-4335 www.townofdresden.com

Town of Edgecomb

Route 27 and Town Hall Road Edgecomb, ME 04556
(207) 882-7018 www.edgecomb.org

Town of Georgetown

50 Bay Point Road Georgetown, ME 04548
(207) 371-2820 www.georgetownme.com

Town of Harpswell

263 Mountain Road Harpswell, ME 04079
(207) 833-5771 www.harpswell.maine.gov

Town of Phippsburg

1042 Main Rd Phippsburg, ME 04562
(207) 389-2653 www.phippsburg.com

Town of Richmond

26 Gardiner Street Richmond, ME 04357
(207) 737-4305 www.richmondmaine.com

Town of Topsham

100 Main Street Topsham, ME 04086
(207) 725-5821 www.topshammaine.com

Town of West Bath

219 Foster Point Rd West Bath, ME 04530
(207) 443-4342 www.westbath.govoffice.com

Town of Westport Island

6 Fowles Point Road Westport Island, ME 04578
(207) 882-8477 www.westportisland.us

Town of Wiscasset

51 Bath Road Wiscasset, ME 04578
(207) 882-8200 www.wiscasset.org

Town of Woolwich

13 Nequasset Road Woolwich, ME 04579
(207) 442-7094 www.woolwich.us

MUSEUMS

Brunswick Naval Museum & Memorial Gardens

179 Admiral Fitch Avenue Brunswick, ME 04011
(207) 729-7216 www.brunswicknavalmuseum.org

Knox Museum (The General Henry Know Museum)

30 High Street Thomaston, ME 04861
(207) 354-8062 www.knoxmuseum.org

Maine Maritime Museum

243 Washington Street Bath, ME 04530
(207) 443-1316 www.mainemaritimemuseum.org

Pejepscot History Center

159 Park Row Brunswick, ME 04011
(207) 729-6606 www.pejepscotshistorical.org

NEWSPAPERS

Coastal Journal

97 Commercial Street Bath, ME 04530
(207) 443-6241 www.coastaljournal.com

The Cryer

135 Maine Street #253 Brunswick, ME 04011
(207) 319-8184 www.thecryeronline.com

The Forecaster

5 Fundy Road Falmouth, ME 04105
(207) 781-3661 www.theforecaster.net

Times Record

3 Business Parkway Brunswick, ME 04011
(207) 504-8270 <http://www.timesrecord.com/>

Turner Publishing

5 Fern Street Turner, ME 04282
(207) 225-2076 www.turnerpublishing.net

NON-PROFIT/ NOT-FOR-PROFIT ORGANIZATIONS

Alzheimer's Association, Maine Chapter

383 US Rt1, Suite 2C Scarborough, ME 04074
(207) 772-0115 www.alz.org/maine

American Cancer Society

PO Box 350, Westbrook, ME 04092-3438
800-227-2345 www.facebook.com/ACSMaine

American Lung Association

for-Profit Organizations 122 State Street Augusta
ME, 04330 (207) 622-6394 www.lung.org

American Red Cross of Northern New England, Central and Mid Coast Maine

16 Community Way Topsham, ME 04086
(207) 272-0497 www.redcross.org/NNE

Androscoggin Home Care and Hospice

15 Strawberry Avenue Lewiston, ME 04240
(207) 777-7740 www.ahch.org

Bath Area Food Bank

807 Middle Street Bath, ME 04530
(207) 650-3478 www.bathfoodbank.org

Big Brothers/Big Sisters of Bath/Brunswick

85 Maine Street Brunswick, ME 04011
(207) 729-7736 www.bbsbathbrunswick.org

Brunswick Housing Authority

12 Stone Street Brunswick, ME 04011
(207) 725-8711 www.brunswickhousing.org

Brunswick Retired Activities Office

62 Pegasus St. Suite 101 Brunswick, ME 04011
(207) 406-4103 www.mid-coastveteranscouncil.org

Dempsey Center

29 Lowell St., 5th floor Lewiston, ME 04240
(877) 336-7287 www.dempseycenter.org

Elmhurst, Inc.

400 Centre Street Bath, ME 04530
(207) 443-9783 elmhurstmaine.com

Goodwill Northern New England

34 Hutcherson Drive Gorham, ME 04038
(207) 774-6323 www.goodwillnne.org

Independence Association

87 Baribeau Drive Brunswick, ME 04011
(207) 504-5817 www.independenceassociation.org

Midcoast Hunger Prevention Program

12 Tenney Way Brunswick, ME 04011
(207) 725-2716 www.mchpp.org

Midcoast Youth Center

4 Old Brunswick Road Bath, ME 04530
(207) 443-8750 www.midcoastyouth.org

Pine Tree Society

149 Front St Bath, ME 04530
(207) 443-3341 www.pinetreesociety.org

Spectrum Generations

1 Weston Court, Suite 109 Augusta, ME 04330
(207) 622-9212 www.spectrumgenerations.org

Chamber Member Directory

Spindleworks

7 Lincoln Street Brunswick, ME 04011
(207) 725-8820 www.spindleworks.org

Tedford Housing

14 Middle Street, Brunswick, ME 04011
(207) 729-1161 tedfordhousing.org

The Salvation Army Bath-Brunswick

25 Congress Avenue Bath, ME 04530
(207) 443-3611 nne.salvationarmy.org/bath

U.S. Small Business Administration (SBA)

68 Sewall Street, Room 512 Augusta, ME 04330
(207) 622-8551 www.sba.gov

United Way of Mid Coast Maine

34 Wing Farm Parkway Suite 201 Bath, ME 04530
(207) 443-9752 www.uwmcm.org/

Village Clubhouse

119 Main Street Topsham, ME 04086
(207) 837-6260 www.villageclubhouse.org

Woodfords Family Services

15 Saunders Way, Ste. 900 Westbrook, ME 04092
(207) 878-9663 www.woodfords.org

OFFICE SUPPLY & EQUIPMENT

A-COPI Imaging Systems

34 Market Street Gardiner, ME 04345
(207) 623-2674 www.a-copi.com

Staples, Inc.

8 Gurnet Road Brunswick, ME 04011
(207) 725-2741 www.staples.com

PAINTING

Moore Painting

228 Old Portland Road Brunswick, ME 04011
(207) 725-1388 www.moorepaintinginc.com

PARTY RENTAL

A Plus Party Rental

10 Washington Avenue Scarborough, ME 04074
(207) 883-4472 www.aplusparyrentalme.com

PEST CONTROL

Modern Pest Services

100 Pleasant Street Brunswick, ME 04011
(207) 747-3480 www.modernpest.com

PHARMACY

Kennebec Pharmacy & Home Care

121 Medical Center Drive, Suite G-500
Brunswick, ME 04011
(207) 729-3642 www.kennebecpharmacy.com

PHOTOGRAPHY

Andrew Estey Photography

14 Maine Street, Suite 0121 Brunswick, ME 04011
(702) 908-5746 www.andrewestey.com

The Pierce Studio

14 Pleasant Street Brunswick, ME 04011
(207) 725-7651 www.piercestudio.com

PLACES OF WORSHIP

First Parish Church, UCC of Brunswick, Maine

217 Maine Street Brunswick, ME 04011
(207) 729-7331 www.firstparish.net

PLUMBING/HEATING

Paul Barabe and Son, Inc.

Sequinland Road Georgetown, ME 04548
(207) 371-2603

Premium H2O, Inc.

17 Libby Lane West Bath, ME 04530
(207) 442-9595 www.premium-h2o.com

POSTAL SERVICES

Mail It 4 U- Bath

10 State Road Suite 9 Bath, ME 04530
(207) 443-1457 www.bathmailit4u.com

Mail It 4 U- Newcastle

4 Mills Road Newcastle, ME 04553
(207) 563-7667 newcastlemailit4u.net

United States Postal Services

30 Pleasant St. Brunswick, ME 04011
(207) 725-2542 www.usps.com

PRINTERS & PUBLICATIONS

Discover Maine Magazine

10 Exchange Street, Suite 208 Portland, ME 04101
(207) 874-7720 www.discovermainemagazine.com

Mainebiz

48 Free Street Portland, ME 04101
(207) 761-8379 X326 www.mainebiz.biz

RFB Advertising

8 North Main Street Rockland, ME 04841
(207) 713-7533 www.rfbadvertising.com

PROPERTY MANAGEMENT

Allen Associates Properties, Inc.

PO Box 5290249 Newton Center, MA 02459-0003
617 332-3800 www.allenpropertiesinc.com

Commercial Properties Inc.

4 Milk Street #103 Portland, ME 04104
(207) 774-1885 www.cpm207.com

DLC Management Corp.

565 Taxter Rd., 4th Floor Elmsford, NY 10523 (914)
631-3131 www.dlcmgmt.com

Fore River Company

5 Milk St. 3rd Floor Portland, ME 04101
(207) 879-1671 www.forerivercompany.com

Millstone Apartments

782 Cundys Harbor Road Harpswell, ME 04079
(207) 729-6587

Priority Real Estate Group, LLC

2 Main Street Topsham, ME 04086

(207) 837-6198 www.priorityrealestategroup.com**REAL ESTATE****Better Homes + Gardens - The Masiello Group**

155 Center Street, Bldg A Auburn, ME 04210

(207) 782-8311 masiello.com**Cromwell Coastal Properties**

61 Flood Ave, Unit 2 Wiscasset, ME 04578

(207) 882-9100 www.cromwellprop.com**Homes & Harbors Coastal Real Estate**

1624 Harpswell Islands Rd. Orr's Island, ME 04066

(207) 833-0500 www.homesandharbors.com**Pejepscot Title**

1 Main St Topsham, ME 04086

(207) 729-0856 www.mb-law.com**RE/MAX Riverside Real Estate**

1 Bowdoin Mill Island Suite 101 Topsham, ME 04086

(207) 725-8505 www.remax-riverside-maine.com**Welcome Home Realty, Inc.**

55 Harpswell Road Brunswick, ME 04011

(207) 725-5502 www.welcomهومerealtyinc.com**REAL ESTATE DEVELOPMENT****JHR Development**

40 South Street, Suite 305 Marblehead, MA 01945

(207) 729-0166 www.brunswick-station.com**RETAIL - CLOTHING & ACCESSORIES****Cool As A Moose**

128 Maine Street Brunswick, ME 04011

(207) 373-9920

Lamey Wellehan

65 Topsham Fair Mall Road #8 Topsham, ME 04086

(207) 504-5093 www.lwshoes.com**RETAIL - CONTRACTORS & BUILDERS****Hammond Lumber Company**

20 Spring Street Brunswick, ME 04011

(207) 729-9924 www.hammondlumber.com**Hancock Lumber Company**

158 Church Road Brunswick, ME 04011

(207) 725-5540 www.hancocklumber.com**RETAIL - GENERAL****Big Al's Super Values**

297 US Route One Wiscasset, ME 04578

(207) 882-6423 www.bigalssupervalues.com**Habitat for Humanity- 7 Rivers Maine & ReStore**

126 Main St. Topsham, ME 04086

(207) 504-9340 www.habitat7rivers.org**Reny's**

86 Front Street Bath, ME 04530

(207) 443-6251 www.renys.com**RETAIL - GROCERY****Bootleggers Beverage Warehouse & Redemption**

13 Hamilton Court Topsham, ME 04086

(207) 725-5555 www.bootleggersmaine.com**Brackett's Market, Inc.**

185 Front Street Bath, ME 04530

(207) 443-2012 www.iga.com**Hannaford- Cook's Corner**8 Gurnet Road, Suite 1 Brunswick, ME 04011 www.hannaford.com**Rusty Lantern Markets**

2 Main St Topsham, ME 04086 (207) 613-7315

rustylantermk.wpengine.com**RETAIL - HOME GOODS****Now You're Cooking**

49 Front Street Bath, ME 04530

(207) 443-1402 www.acooksemporium.com**Sherwin Williams Company**

179 Pleasant Street Brunswick, ME 04011

(207) 729-0141 www.sherwin-williams.com**Sherwin Williams Company**

86 Topsham Fair Mall Rd Topsham, ME 04086

(207) 721-0158 www.sherwin-williams.com**Wayfair**

46 Burbank Avenue Brunswick, ME 04011

844-739-6010 www.wayfair.com**RETAIL - INTERIOR DESIGN****Maine Street Design Co.**

160 Front Street Bath, ME 04530

(207) 541-9187 www.mainestreetdesign.com**RETAIL - ONLINE****Emily's Dollar Spot LLC**

2333 Hallowell Road Litchfield, ME 04350

(207) 522-1903 www.emilydollarspot.com**RETAIL - SPECIALTY FOOD****FIORE Olive Oils & Vinegars**

90 Maine Street Brunswick, ME 04011

(207) 406-4957 www.fioreoliveoils.com**Morning Glory Natural Foods**

60 Maine Street Brunswick, ME 04011

(207) 729-0546 www.moglonf.com**Wilbur's of Maine, Chocolate Confections**

174 Lower Maine St. Freeport, ME 04032

(207) 865-4071 www.wilburs.com**RETAIL - SPECIALTY GOODS****Healing Harbors**

430 Bath Road, Suite 101 Brunswick, ME 04011

(833) 825-3223 www.healingharbors.com

Chamber Member Directory

RETAIL - TIRE SALES & REPAIR/FULL SERVICE GAS

Cahill Tire Pros

4 State Rd. Bath, ME 04530
(207) 443-9811 www.cahilltire.com

RETIREMENT COMMUNITY

Highland Green

7 Evergreen Circle Topsham, ME 04086
(207) 725-4549 www.highlandgreenlifestyle.com

The Highlands

30 Governors Way Topsham, ME 04086
(207) 209-2084 / (888)-760-1402 www.highlandsrc.com

Thornton Oaks Retirement Community

25 Thornton Way, Ste. 100 Brunswick, ME 04011
(207) 373-4600 www.thorntonoaks.com

SALON & SPA SERVICES

Calm Moments Spa

190 Lincoln Street Bath, ME 04530
(207) 798-1534 www.calmmoments.net

SEPTIC SYSTEMS

RA Webber and Sons

357 Cundys Harbor Road Harpswell, ME 04079
(207) 725-7727 www.webberandsons.com

SPORTS & GAMING

Portland Sea Dogs

271 Park Ave Portland, ME 04104
(207) 874-9300 www.seadogs.com

STORAGE

Spaceman Self Storage

48 Wing Farm Parkway Bath, ME 04530
(207) 319-3728 spacemanselfstorage.co/

STORAGE & MOVING

Bisson Moving & Storage

56 Bibber Parkway Brunswick, ME 04011
(207) 591-1000 www.movebisson.com

TECHNOLOGY- IT & AUDIO/VISUAL

Harbor Digital Systems

74 Orion St. Brunswick, ME 04011
(207) 236-9097 www.harbordigitalsystems.com

TECHNOLOGY- IT/PHONE SERVICES

GWI

43 Landry Street Biddeford, ME 04005
(207) 494-2020 www.gwi.net

TECHNOLOGY- NETWORKING

Maine Technology Users Group (MTUG)

PO Box 8459 Portland, ME 04104
(207) 370-5327 www.mtug.org

TOURS

Red Cloak Tours

PO Box 545 Damariscotta, ME 04543
(207) 380-3806 www.RedCloakTours.com

TRACTOR DEALER

Topsham Tractor & Equipment

403 Lewiston Road Topsham, ME 04086
(207) 209-2000 www.facebook.com/topshamtractor

TRANSPORTATION

Amtrak Downeaster

16 Station Ave. Suite 104 Brunswick, ME 04011
800-USA-RAIL
www.amtrakdowneaster.com/station/brunswick

Casco Bay Lines

56 Commercial Street Portland, ME 04112
(207) 774-7871 www.cascobaylines.com

TRAVEL/TOURISM

AAA of Northern New England

147 Bath Road, Suite A-130 Brunswick, ME 04011
(207) 729-3300 www.aaa.com

Castle Tucker & Nickels Sortwell House

2 Lee Street Wiscasset, ME 04578
(207) 882-7169
www.historicnewengland.org/castletucker

Coastal Maine Botanical Gardens

132 Botanical Gardens Drive Boothbay, ME 04537
(207) 663-8000 www.maine gardens.org

Destinations to Travel

(207) 208-6340 www.d2travel.com

Thomas Point Beach

29 Meadow Road Brunswick, ME 04011
(207) 725-6009 <http://www.thomaspointbeach.com/>

WATER TREATMENT

The Water Doctors

PO Box 281 Bath, ME 04530
(207) 443-8080 www.thewaterdoctorsofmaine.com

WEB/IT SOLUTIONS

Aptuitiv

224 Broadway Farmington, ME 04938
(207) 860-4040 www.aptitiv.com

Barry Costa LLC

Lewiston, ME 04240
(207) 313-8558 www.barrycosta.com

BEK, Inc.

9 Industrial Parkway Suite 1 Brunswick, ME 04011
(207) 729-7600 www.bekinc.net

Burgess Technology Services

6 Oak Grove Avenue Bath, ME 04530
(207) 443-9554 www.burgess technologyservices.com



AT WESTBROOK PERFORMING ARTS CENTER



Alice in Wonderland • October 9 & 10

AT PICKARD THEATER AT BOWDOIN COLLEGE



Sleeping Beauty • August 12 & Shrek • August 19

VISIT US ONLINE TO VIEW PRODUCTIONS,
VENUE LOCATIONS AND TICKET PRICING.



THE HIGHLANDS
A GRACE MGMT COMMUNITY

Your Safe Place *IS* Your Happy Place!

Our residents and associates recently benefited from the new COVID-19 vaccine, allowing them to focus on the moments that matter most: friendships, joy, and relaxation. As Good Neighbors, we continue to lead the way in exceptional safety and experiences, so you can live your best life – exactly as you want.

**THERE'S NEVER BEEN A BETTER TIME TO
MAKE OUR COMMUNITY YOUR HOME.**

**CALL TODAY TO SCHEDULE
A PERSONALIZED VISIT!
(207) 725-2650**

**It's not like home.
It *is* home.™**



30 Governors Way • Topsham, ME 04086
(207) 725-2650 • www.HighlandsRC.com

